



INKJET PRINTERS' CONSUMABLES SHOW

MAKE CODING EASIER

CHEEF TRUSTWORTHY CODING SPECIALIST, CODING SOLUTION SUPPLIER



CITRONIX



DOD INK



DOMINO



HITACHI



IMAJE



LINX



ROTTWEIL



VIDEOJET



WILLETT

CONTACT METHOD: EMAIL: SALES@CHEEF.CN

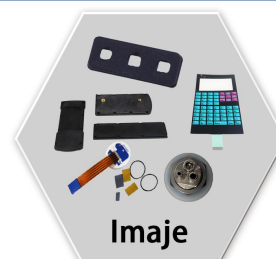
WECHAT/WHATSAPP/TEL: +86 181 6857 5767 WEBSITE: WWW.INKJETINKFACTORY.COM



INKJET PRINTERS' SPARE PARTS SHOW

MAKE CODING EASIER

CHEEF TRUSTWORTHY CODING SPECIALIST, CODING SOLUTION SUPPLIER



CONTACT METHOD: EMAIL: SALES@CHEEF.CN

WECHAT/WHATSAPP/TEL: +86 181 6857 5767 WEBSITE: WWW.INKJETINKFACTORY.COM



TIJ INKJET PRINTER C801

MAKE CODING EASIER

CHEEF TRUSTWORTHY CODING SPECIALIST, CODING SOLUTION SUPPLIER



ITEM	PARAMETER
Dimensions	Controller: H×W×D: 151×93×32mm/5.9×3.7×1.3inch Printhead: H×W×D: 175×52×33mm/6.9×2.0×1.3inch
Selectable Languages	Chinese, English, Japanese, Korean, French, German, Spanish, Portuguese and Russian;
Resolution	50~600DPI
Counters	Flexible setting for serial number, Lot-Box code counters
Printable Heights	1~12.7mm
Printing speed	0~60m/min (300 DPI);
Printing Objects	Barcodes, Character, Numeric, Logos, Date/Time, Expiry Date Shift Code, Counter, Lot-Box Code;
Print Speed	Print speed can be set, auto-measuring or using external synchronizer;
Barcodes	UPCA, UPCE, EAN13, EAN8, INT25, CODE39, CODE128, ENA 128, PDF417, DATAMATRIX, QR; (Allows user to add the barcode)
Date format	Variety of date modes available (Production Date, Use by Date, Expiration Date, etc);
Interface	1) 5inch 800480 color LCD touch screen; 2) Display using brand new touch interface;
Port	1) Ethernet: Support PC software communication protocol/SDK 2) USB2.0: Support U-Disk 3) DB15: For external devices like photocell, synchronizer
Ink management	1) Automatically recognize the ink types, and identify the optimum printing parameters; 2) Guarantee of using genuine original HP ink; 3) Automatic measuring system for the usage of the ink;
Mounting	Standard side, downside and anti-shock printing bracket;
Power Supply	AC 100V~240V 50~60HZ, 30W (Specified AC adaptor)
Product Certification	CE, FCC



CALL CHEEF AT (86) 512 62810865 FOR MORE MACHINE INFORMATION.
EMAIL: SALES@CHEEF.CN WEBSITE: WWW.INKJETINKFACTORY.COM

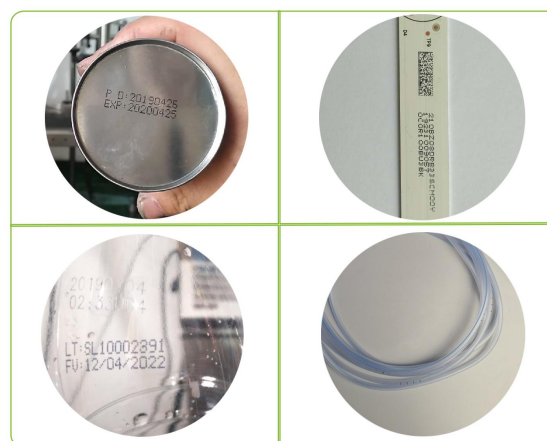


CIJ INKJET PRINTER CF-7500

MAKE CODING EASIER

CHEEF TRUSTWORTHY CODING SPECIALIST, CODING SOLUTION SUPPLIER

Model	CF-7500	CF-7500+
Print head diameter	41mm	41mm
Print lines	1-3lines	1-5 lines
Print head length	260mm	260mm
Nozzle aperture	60 um	60 um
Conduit length	2700mm	2700mm
Machine size	345*286*570mm	345*286*570mm
Weight	27KG	27KG
Voltage	100V-240V AC	100V-240V AC
Frequency	50Hz-60Hz	50Hz-60Hz
Power	120W	120W
Operating temperature	5-45° C	5-45° C
Relative humidity	0-90%,Non-frosting	0-90%,Non-frosting



CALL CHEEF AT (86) 512 62810865 FOR MORE MACHINE INFORMATION.
EMAIL: SALES@CHEEF.CN WEBSITE: WWW.INKJETINKFACTORY.COM

CO2 LASER MACHINE

MAKE CODING EASIER



CHEEF TRUSTWORTHY CODING SPECIALIST, CODING SOLUTION SUPPLIER

Code
Master



Laser power	20W	30W	70W
Laser wavelength	10.64um	10.64um	10.64um
Marking range	70*70/110*110mm	70*70/110*110mm	70*70/110*110mm
Marking depth	≤0.01~3mm	≤0.01~3mm	≤0.01~3mm
Min. line width	≥0.01mm	≥0.01mm	≥0.01mm
Min. character	≥0.4mm	≥0.15mm	≥0.15mm
Repeatability	±0.001mm	±0.001mm	±0.001mm
Marking speed	0-7000mm/S	0-7000mm/S	0-10000mm/S
Fiber laser life	2~30000 hours	2~30000 hours	2~30000 hours
Cooling method	Air cooled	Air cooled	Air cooled



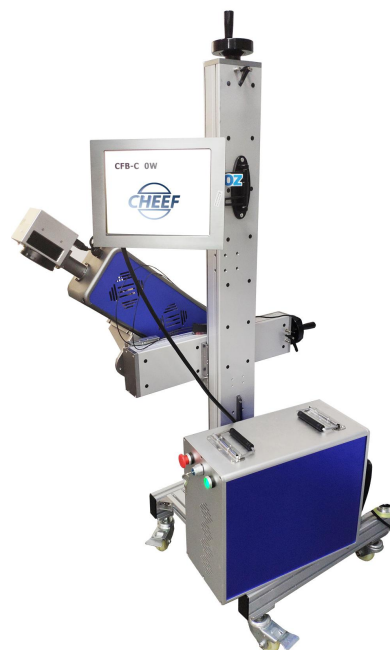
Call CHEEF at (86) 512 62810865 for more machine information.
Email:sales@cheef.cn website:www.laserprinterss.com



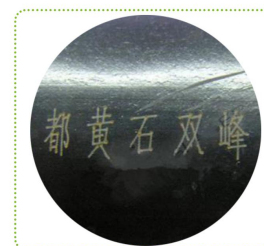
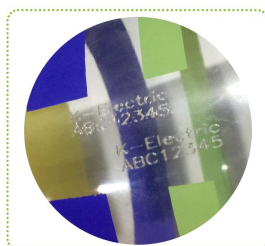
FLY CO2 LASER PRINTER

MAKE CODING EASIER

CHEEF TRUSTWORTHY CODING SPECIALIST, CODING SOLUTION SUPPLIER



Average power	20W	30W	70W
Laser	CO2 laser	CO2 laser	CO2 laser
Wave length	10.64um	10.64um	10.64um
Repeat Frequency of Laser	≈20kHz	≈25kHz	≈25kHz
Marking speed	≈7000mm/s	≈7000mm/s	≈10000mm/s
Repeat positioning accuracy		0.01mm	
Marking Area	70×70mm/110x110mm/175x175mm(apolegamy)	70×70mm/110x110mm/175x175mm(apolegamy)	70×70mm/110x110mm
Minimum line width		0.1mm	
Min character		0.4mm	
Power Supply	1.2KW/AC220V /50Hz /5A	2KW/AC220V /50Hz /6A	3KW/AC220V /50Hz /6A
Environment Request		0~35° C, Humidity=90%	



CALL CHEEF AT (86) 512 62810865 FOR MORE MACHINE INFORMATION.
EMAIL:SALES@CHEEF.CN WEBSITE:WWW.LASERPRINTERSS.COM



DESKTOP FIBER LASER PRINTER

MAKE CODING EASIER

CHEEF TRUSTWORTHY CODING SPECIALIST, CODING SOLUTION SUPPLIER



Average power	20W	30W
Laser	Fibre laser	Fibre laser
Modulation frequency range	20kHz~80kHz	20kHz~80kHz
Wave length	1064nm	1064nm
maximum speed	7000mm/s	7000mm/s
resolution ratio	0.001mm	0.001mm
Repeat positioning accuracy	0.002mm	0.0025mm
Marking Area	110*110mm(apolegamy)	70×70mm,100*100mm(apolegamy)
Minimum line width	0.01mm	0.01mm
Min character	0.2mm	0.2mm
cooling-down method	air patenting	air patenting
Power Supply	0.6KW/AC220V/50Hz	0.6KW/AC220V/50Hz
Environment Request	0~35° C,Humidity=90%	0~35° C,Humidity=90%



CALL CHEEF AT (86) 512 62810865 FOR MORE MACHINE INFORMATION.
EMAIL:SALES@CHEEF.CN WEBSITE:WWW.LASERPRINTERSS.COM



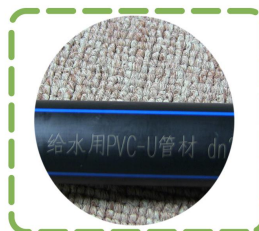
FLY FIBER LASER PRINTER

MAKE CODING EASIER

CHEEF TRUSTWORTHY CODING SPECIALIST, CODING SOLUTION SUPPLIER



Average power	20W	30W
Laser	Fibre laser	Fibre laser
Modulation frequency range	20kHz~80kHz	20kHz~80kHz
Wave length	1064nm	1064nm
maximum speed	7000mm/s	7000mm/s
resolution ratio	0.001mm	0.001mm
Repeat positioning accuracy	0.002mm	0.0025mm
Marking Area	110*110mm(apolegamy)	70×70mm,100*100mm(apolegamy)
Minimum line width	0.01mm	0.01mm
Min character	0.2mm	0.2mm
cooling-down method	air patenting	air patenting
Power Supply	0.6KW/AC220V/50Hz	0.6KW/AC220V/50Hz
Environment Request	0~35° C, Humidity=90%	0~35° C, Humidity=90%



CALL CHEEF AT (86) 512 62810865 FOR MORE MACHINE INFORMATION.
EMAIL:SALES@CHEEF.CN WEBSITE:WWW.LASERPRINTERSS.COM



UV LASER MARKING MACHINE

MAKE CODING EASIER

CHEEF TRUSTWORTHY CODING SPECIALIST, CODING SOLUTION SUPPLIER



Average power	3.0	5.0
wavelength	355	355
repeat frequency	10Hz to 150kHz (up to 500kHz)	10Hz to 150kHz (up to 500kHz)
Pulse width	18	18
Average power stability	< ±3% over 24 hours	< ±3% over 24 hours
Single pulse energy	100	100
Single pulse stability	<3%rms	<3%rms
Spot pattern	TEM00($m^2 < 1.3$)	TEM00($m^2 < 1.3$)
Spot divergence angle	<2mrad	<2mrad
Spot diameter	0.7mm	0.7mm
Spot roundness	>90%	>90%
Point to stability	<50urad	<50urad
Refrigeration method	Water-cooling	Water-cooling
Temperature range of the usage environment (°C)	-10-50	-10-50



CALL CHEEF AT (86) 512 62810865 FOR MORE MACHINE INFORMATION.
EMAIL:SALES@CHEEF.CN WEBSITE:WWW.LASERPRINTERSS.COM



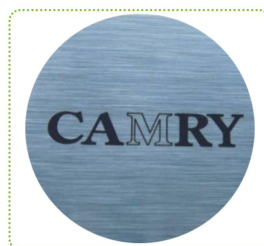
UV LASER MARKING MACHINE

MAKE CODING EASIER

CHEEF TRUSTWORTHY CODING SPECIALIST, CODING SOLUTION SUPPLIER



Average power	3.0	5.0
wavelength	355	355
repeat frequency	10Hz to 150kHz (up to 500kHz)	10Hz to 150kHz (up to 500kHz)
Pulse width	18	18
Average power stability	< ±3% over 24 hours	< ±3% over 24 hours
Single pulse energy	100	100
Single pulse stability	<3%rms	<3%rms
Spot pattern	TEM00($m^2 < 1.3$)	TEM00($m^2 < 1.3$)
Spot divergence angle	<2mrad	<2mrad
Spot diameter	0.7mm	0.7mm
Spot roundness	>90%	>90%
Point to stability	<50urad	<50urad
Refrigeration method	Water-cooling	Water-cooling
Temperature range of the usage environment (°C)	-10-50	-10-50



CALL CHEEF AT (86) 512 62810865 FOR MORE MACHINE INFORMATION.
EMAIL: SALES@CHEEF.CN WEBSITE: WWW.LASERPRINTERSS.COM