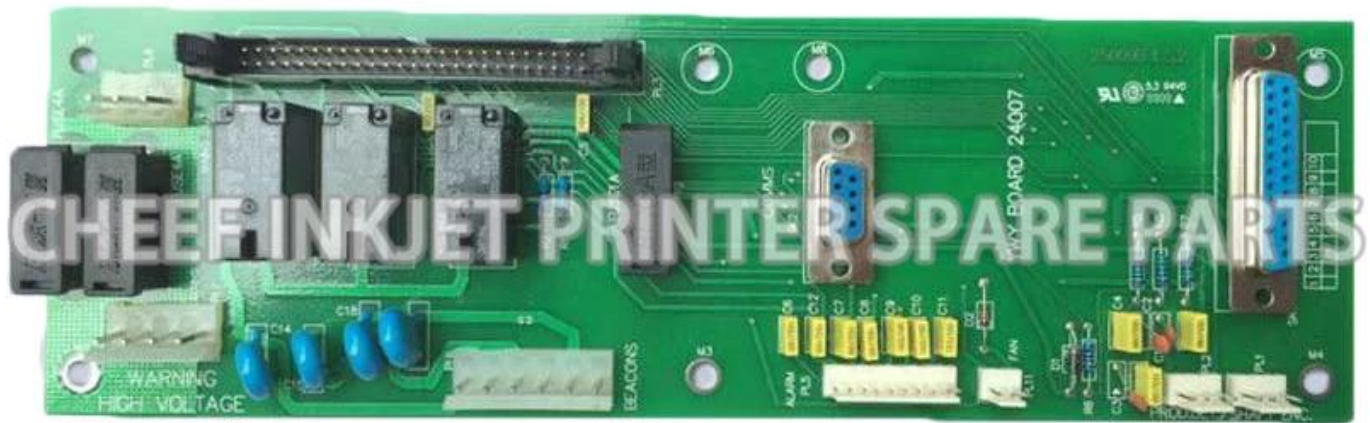


|                |                            |
|----------------|----------------------------|
| Часть №        | 25109                      |
| Часть названия | PCB ASSY ВНЕШНИЙ ИНТЕРФЕЙС |
| Совместим с    | для домино                 |





**For DOMINO Inkjet Printer Spare Parts**

| Product Name                                 | Mold Number  | Product Name                                     | Mold Number      |
|--|--------------|--|------------------|
| DRIVER ROD ASSY 4KHZ                         | 26747        | PRINT HEAD SHORT COMPLETE 16MM                   | 33544            |
| DRIVER ROD ASSY 12KHZ                        | 26856        | PRINT HEAD SHORT COMPLETE 20MM                   | 33518            |
| Drive lever w/winch                          | 14377        | A series bottom board                            | 25107            |
| SWITCH TO E1 PCB CABLE ASSY                  | 37179        | A SERIES OF LOCK(WITH KEY)                       | P70152           |
| KEY FOR 18011                                | 15903        | CHASSIS END BOX(WITH COVER)                      | 36728-PY0255     |
| USER PORT PCB-CP                             | 25123        | PRODUCT DETECTOR SHAFT ENCODER                   | 37721            |
| USER PORT PCB-CP                             | 25123        | WASH BOTTLE 250ml                                | PC0003           |
| RS32 COMMS OPTION KIT A SERIE                | 37775        | CONNECTOR FOR VISCOMETER                         | PC1200           |
| 8M FLASH PROGRAM PCMCIA GRAD                 | 13524        | SCREW PAN SLT ST ST M2*5                         | 4207             |
| PCMCIA FULL PROGRAMME CARD (1                | 13548        | OPERATION & MAINTENANCE MANUAL                   | 27087            |
| 3M SRAM MEMORY CARD PCMCIA/FOR               | 13822        | FRONT PANEL PCB ASSY A200                        | 25112            |
| BALLBEARING 7mm*5                            | 14664        | pressure pump                                    | 36610-DBA7021-FY |
| HOLSTER STD                                  | 26733        | OPERATION & MAINTENANCE MANUAL                   | 27080            |
| PROBE ASSY H.Y.                              | 26081        | PLUG IP68 9WAY CABLE MOUNTING                    | 13503-PC1197     |
| WASH BOTTLE                                  | 14563        | FILTER KIT 20MICRON BLACK                        | 29265-B          |
| FILTER OPTION KIT                            | 37751        | DROP GEN ASSY 40U & 138BK (SPA                   | 45463            |
| TEMP SENSOR PLUG ASSY                        | 37732        | FILTER TO SWITCH CABLE ASSY                      | 37720            |
| O ring for pressure sensor                   | 4185         | GUTTER TUBE ADAPTOR(OPAQUE)                      | 67813            |
| Ink solvent valve O ring                     | 4159         | JET PUMP KIT SPARES A SERIES                     | 6781             |
| O ring 84*1.28*1.78                          | 4155         | FUSE 20X5 (T) 0.5A                               | 1214             |
| MAINS SWITCH ASSEMBLY                        | 37744        | FUSE 20X5 (T) 2A                                 | 1248             |
| TUBE CONNECTOR GUTTER (BLACK)                | 36706        | SKT IP68 9WAY CABLE MOUNTING                     | 13501            |
| EHT SENSOR RM ASSY                           | 36837        | USER PORT PCB                                    | 25036            |
| HINGE PIN FOR A SERIES                       | 26186        | A100 front panel                                 | 21531            |
| E1 PCB R CABLE ASSY                          | 37712        | ALARM LIGHT                                      | 67802            |
| FRONT PANEL RIBBON CABLE ASSY                | 37713        | FUSE BRACKET                                     | E40413           |
| THERMISTOR KIT                               | 45191        | FILTER   | 14831-PG0084     |
| CONDUIT 3M STD ASSY(NO CABLE I               | 36702        | PP boom O ring                                   | 6037             |
| PCB ASSY EXTERNAL INTERFACE                  | 25109        | A SERIES CHINESE MEMBRANE(L/F)                   | 36674            |
| END BOX COVER SEAL                           | 36730        | Tube PTFE 1 mm natural                           | 94201            |
| CABLE ASSY USER PORT                         | 37740        | GEAR KIT FOR DOMINO A SERIES OPAQUE PUMP         | P90310           |
| USER PORT KIT A SERIES                       | 37778        | RIBBON CABLE ASSEMBLY                            | 47738            |
| RETAINER                                     | 26871        | ANTI-COUNTERFEIT BOARD                           | PC1400           |
| GROUNDED RETAINING SCREW                     | 36727        | CONNECTOR FOR VISCOMETER(NEW STYLE)              | PL1417           |
| M 5*10 embossed fastening screw              | 4530         | DISPLAY LIGHTPIPE                                | E41480           |
| M 3*6 six angle screw                        | 47728        | RETURN VALVE CLAMP UMP GEARS FOR DOMINO A SERIES | 36610-CL         |
| SCREW SKT CAP ST ST M3*5                     | 4729         | GEAR KIT FOR PCMP                                | 40206            |
| PLUG IP68 25 WAY                             | 13507        | GEAR KIT FOR PUMP GENERAL                        | P90261           |
| CHASSIS PINPOINT                             | 36740        | IP65 A series nozzle cap                         | 36570            |
| SENSOR PINPOINT ASSEMBLY(PNPO                | 36827        | MAINS SWITCH ASSEMBLY                            | 37744            |
| MAINS FILTER CABLE ASSY                      | 37746        | Viscometer                                       | 37733            |
| JET PUMP KIT SPARES A-SERIES                 | 37772        | Viscometer                                       | 37733-PC0359     |
| A series Arabic keyboard (small              | 37581        | A series of 40 style viscometer                  | 274              |
| A series Arabic keyboard (large              | 66544        | D type high resolution roll                      | 384              |
| FILTER MAINS                                 | 13492        | D type high resolution rolling                   | 383              |
| GUTTER TUBE                                  | 36723        | D type spray nozzle bracket kit                  | 306              |
| SOLENOID CABLE ASSY                          | 37751        | MAGNIFIER FOR HEAD COVER                         | 001670SP         |
| DRIVE ROD CAP                                | 26896        | RIBBON CABLE ASSY, INK 513 PCB A400              | 67726            |
| FITTING 14                                   | 15554        | WHITE INK PUMP(SHORT ROTOR) FOR 255              | PP0013           |
| FUSE 20*5(D)A                                | 1216         | WHITE INK PUMP(LONG ROTOR) FOR 255               | PP0014           |
| FUSE 20*5(D)A                                | 1228         | PUMP (SHORT ROTOR)                               | PP0036           |
| A SERIES OPAQUE INK MANIFOLD A               | 67807        | PUMP DUAL CIRCUIT 255 DRIVE STD SHORT ROTOR      | PP0017           |
| SPRING COMPRESSION IPSI ST ST                | 14186        | PUMP DUAL CIRCUIT 255 DRIVE STD LONG ROTOR       | PP0034           |
| SPRING COILP 16-150 PSI ST ST                | 14830        | PRODUCT DETECTOR SHAFT ENCODER CABLE ASSEMBLY    | 37721-PC1268     |
| BATTERY FOR PCB                              | 37711-PC0071 | DEFLECTOR PLATE ASSY                             | 36703-280        |
| REPAIR KIT FOR 18011(ONLY THE PRESSURE GEAR) | 36610-PC0211 | DRIVER ROD ASSY 4KHZ                             | 26747            |
| O ring of ink solvent sensor                 | 37753-PL0124 | DRIVER ROD ASSY 4KHZ                             | 26747            |
| A series pump motor M2                       | 36610-PP0019 | DRIVER ROD ASSY 12KHZ                            | 26856            |
| INK MANIFOLD WITHOUT SENSOR                  | 37753-PC0042 | DRIVER ROD ASSY 12KHZ                            | 26856            |
| A series pump motor M1                       | 36610-PP0018 | 75 MICRON NOZZLE ASSEMBLY                        | 26743            |
| BRASS PIN CONNECTOR                          | 50023        | 75 MICRON NOZZLE ASSEMBLY                        | 26824            |
| RAD CAPS FOR MANIFOLD                        | 50023        | 60 MICRON NOZZLE ASSEMBLY                        | 26828            |
| MAKE-UP RESERVOIR (1 #) MAKEUP               | 37909        | 60 MICRON NOZZLE ASSEMBLY                        | 26838            |
| BULGIN CONNECTOR FOR A SERIES                | 37723-PC0026 | 40 MICRON NOZZLE ASSEMBLY                        | 26829            |
| Nozzle cap lens                              | 50023        | 40 MICRON NOZZLE ASSEMBLY                        | 26829            |
| DOCOD VENTURI USED FOR A-SERIE               | PP0028       | M 2*MM six angle screw                           | 4588             |
| Double head pump (exclusive mo               | 36610        | ADJUSTING SCREW                                  | 36719            |
| FRONT PANEL PCB ASSY A200                    | 25112        | ADJUSTING SHEET                                  | 36720            |
| MAKEUP FILTER CONNECTOR                      | 50037        | SCREW LOCKING                                    | 36721            |
| MAKE-UP MANIFOLD WITHOUT SENSO               | 37754-PC0062 | CAM  | 36722            |
| HEATER SPARES KIT WITHOUT HEAT               | 36894-PC0030 | DEFLECTOR PLATE ASSY                             | 36703            |
| POWER SUPPLY UNIT ASSY                       | 37756        | DEFLECTOR PLATE PP ASSY                          | 36743            |
| Code pin machine (non-numeric)               | PB-0058      | STROBE LED ASSY                                  | 45438            |
| A series motherboard PEB board               | PC-0070      | VALVE SOLENOID 10M(D)A TO SPE                    | 14733            |
| FILTER 5 MICRON                              | 14831        | CHARGE ELECTRODE ASSY 75UMK3                     | 45411            |
| INK RESERVOIR BOTTLE FOR DOMINO 1.2L         | PB-0015      | CHARGE ELECTRODE ASSY 75UMK3                     | 45411            |
| FRONT PANEL PCB ASSY A200                    | 25112-PC1091 | STROBE LED PINPOINT ASSY                         | 45426            |
| MACHINE BASE FOR A-SERIES                    | PC0044       | SENSOR TUBE STD ASSY                             | 36715            |
| MOUNT FOR A SERIES PRINT HEAD                | PC0047       | GUTTER TUBE CLAMP KIT                            | 67811            |
| INK LEVEL SENSOR                             | 37753-PC0043 | EHT SENSOR RM ASSY                               | 26836            |
| SCREW KIT                                    | 36717-PC0188 | HEATER SPARES KIT                                | 36894            |
| MAKE UP BOTTLE FOR DOMINO 0.825L             | PB0017       | CHARGE ELECTRODE ASSY 40UMK3                     | 45431            |
| CHARGE ELECTRODE SENSOR 3M ASS               | 36836-PC1000 | DROP GEN 75U (SPARES)                            | 45463            |
| LIP SEAL MAKEUP INK CARTRIDGE                | 14225        | HOLSTER PINPOINT                                 | 36741            |
| CONNECTOR TUBE FESTO 1.8 X 3mm               | 14175        | INK DRIVE ROD CLAMP                              | 26888            |
| CABLE FOR H.V. POWER SUPPLY                  | 37717        | WASH STATION MTO BRACKET ASSY                    | 36891            |
| PRINTHEAD CONDUIT CONNECTOR                  | 36700-PY0102 | CHASSIS STD                                      | 36711            |
| A series Solvent level sensor                | 37754-PC0063 | DROP GENERATOR MOUNT                             | 36718            |
| SCREW PAN SLT ST ST M2X12                    | 4203         | PIVOT DROP GENERATOR MOUNT                       | 36726            |
| SCREW CSK POZ BLK NI M2 5X6                  | 4732         | GUTTER TUBE ADAPTOR                              | 36820            |
| M 5*8 six angle screw                        | 4305         | CHASSIS END BOX                                  | 36728            |
| H.V. POWER SUPPLY +285V+20V 3                | 12170        | END BOX COVER                                    | 36729            |
| MAKE UP BOTTLE FOR CODEBOX 0.6L              | PH0001       | SOLENOID VALVE 2W AY 24V3 8W                     | 14780            |
| 50 MICRON NOZZLE ASSEMBLY                    | 26935        | SOLENOID VALVE 2W AY 24V3 8W                     | 14780            |
| GUTTER TUBE CLAMP BLOCK                      | 36724        | FILTER 5 MICRON                                  | 14831            |
| JET PUMP 0.7                                 | 37772-PL0244 | DAMPER MODULE                                    | 14823            |
| JET PUMP FOR OPAQUE 0.7                      | 67811-PL0245 | FILTER KIT 20MICRON                              | 29265            |
| Vennart type O ring (big)                    | PP0094       | FILTER KIT NO1 REPLACEMENT                       | 29273            |
| Vennart type O ring (small)                  | PP0095       | BULKHEAD FILTER 10U TO SPEC                      | 37940            |
| COIL FOR SOLENOID VALVE                      | 14780-PP0062 | CONNECTOR TUBE FESTO 1.8 X 3mm                   | 14174            |
| MOUNT FOR A SERIES IBEROPTIC S               | PC1110       | CONNECTOR MALE 6X1.8 inch BSP                    | 14179            |
| CHARGE ELECTRODE ASSY 75U MK3                | D545411      | Main filter panel                                | 14455            |
| CABIN FOR A200                               | PL0313       | INK MANIFOLD ASSY WITH SENSOR                    | 37753            |
| INK CARTRIDGE BOTTLE FOR DOMINO 0.825L       | PB0014       | MAKE-UP MANIFOLD ASSY WITH SEN                   | 37754            |
| Tube Polythene 8.0/6.0mm                     | PG6036       | PRESSURE TRANSDUCER ASSY TO SP                   | 37731            |
| CABIN FOR A200                               | PL0314       | TUBE WHITE 3.181 X 38MM                          | PY0167           |
| PRINTHEAD MOUNTING PLATE                     | 28161        | TUBE Ø 6.4 0mm                                   | PG0021           |
| A SERIES OPAQUE INK MANIFOLD ASSY(S)         | 67807-PC1065 | INK MANAGEMENT BLOCK ASSY                        | 37752            |
| CAP FOR PLUG WITH CABLE                      | PC0242       | 1cc 4mm ID Tube - CONNECTOR TU                   | 14170            |
| A SERIAL 3WAY MOUNTING                       | 37722-PC0245 | FAN ASSY 38mm                                    | 67656            |
| CABLE ASSY INVERTER TO SED                   | 37838        | BATTERY FOR PCB                                  | 37711            |
| USER PORT KIT -CP                            | 36628        | PCB ASSY INK SYSTEM INTERFACE                    | 25115            |
| PRINTHEAD (M) STANDARD                       | 36776        | POWER SUPPLY UNIT ASSY                           | 37758            |
| CABLE ASSY BEACON PORT                       | 37737        | POWER SUPPLY UNIT ASSY                           | 37758            |
| BEACON ASSY IP65 24V IP68 PLUG               | 36066        | AIR FILTER ASSY A100                             | 37805            |
| EUROPEAN (L A) KEYBOARD ASSY A               | 36676        | LCD DISPLAY VEGA (MODIFIED)                      | 13537            |
| ALARM PORT KIT                               | 37738        | MEMBRANE KEYBOARD ASSY                           | 37726            |
| SKT IP68 9WAY CABLE MOUNTING                 | 13501        | LCD ASSY   | 37727            |
| BEACON ASSY IP65 110V IP68 PLUG              | 36067        | PC104 MEMORY EXPANSION PCB ASS                   | 25121            |
| CONNECTION FOR CHARGE ELECTROD               | 45411-EA0066 | A SERIES CHINESE MEMBRANE(L/F)                   | 36674            |
| Backup socket                                | PC0243       | European (L A) Keyboard Assy A                   | 36675            |
| CHASSIS DOWTAIL                              | 36734        | Interform motherboard                            | 25135            |
| A series English keyboard mask               | 37726        | MAINS CABLE ASSY(POWER AC CALB                   | 37722            |
| Nozzle O ring                                | 6024         | H.V. POWER SUPPLY +285V+20V 3                    | 12170            |
| High pressure envelope                       | 12170-PL0309 | AIR FILTER ASSY A200                             | 37708            |
| PRINT HEAD SHORT COMPLETE 12MM               | 33517        | INVERTER PCB ASSY FOR 13537                      | 13538            |
| PRINTHEAD PP 3M STANDARD                     | 36745        | PLUG IP68 7WAY CABLE MOUNTING                    | 13499            |
| INK SYST PCB R CABLE ASSY                    | 37714        | PRINTHEAD (M) STANDARD                           | 36700            |

**For DOMINO A+SeriesInkjet Printer Spare Parts**

| Product Name                           | Mold Number  | Product Name                     | Mold Number  |
|--|--------------|----------------------------------|--------------|
| Power Supply Kit                       | 3-0160012SP  | CONNECTOR FOR D ETHERNET         | PC01400195SP |
| FILTER 5 MICRON                        | 14831        | CONNECTOR FOR D POWER SUPPLY     | PC01600085SP |
| BACKPLANE TO STANDARD INTERFAC         | 3-01600080SP | CONNECTOR FOR D USB              | PC01400105SP |
| INK SYST PCB RIBBON CABLE ASSE         | 37714-PC1239 | A100- Front panel                | 3-01300013SP |
| STANDARD INTERFACE PCB ASSEMBL         | 3-01300095P  | H.V. POWER SUPPLY FOR D A+ SER   | PC1462       |
| LCD ASSEMBLY (NO TOUCH SCREEN,         | 1-0140001SP  | ALARM LIGHT FOR DOMINO A+ SERIES | 01200025SP   |
| European Keyboard Assembly             | 1-0160400SP  | SEAL REAR COVER FOR CONNECTOR    | PC1300       |
| PEC PCB                                | 3-0130002SP  | A+ Backup socket                 | PC1299       |
| DISPLAY LIGHTPIPE FOR DOMINO A+ SERIES | PL1476       | A200- Front panel                | 3-01300013SP |
| CONNECTOR FOR D POWER SUPPLY           | PC1451       | A+ CABINET PANEL                 | PL1267       |
| 512M SRAM MEMORY                       | PL1469       | PLASTIC BACK COVER FOR A+ FRON   | PC1811       |
| D type A120/A220/A320 Nozzle           | 002345SP     |                                  |              |

# COMPANY INFORMATION



One hundred years only do one thing, to provide the best quality and economical ink for all over the world's inkjet printers

At cheef we possess a well-equipped Research and Development facility alongside substantial internal resources to offer custom-made products for specific request. Our core priority is competitive cost with high quality products and fast service.





## Payment and Shipment

### Payment

1. Generally, we accept the following payment methods: T/T; Western Union; paypal. T/T; western union. And our protection only gives the payment ways accepted by Alibaba Trade Assurance.



## Shipment

1. We will sent the items within 5days (working days, Not holiday sea for ink and about 15days for machine after receiving your payment.

2.The shipment is always by Express , air or sea .

Sea transportation: It is used for large volume of products.It is shipped from port to port.

It is the most economical shipment way, we suggest this with order more than 1cbm, the unit cost will be the cheapest.

Air transportation:It is shipped from airport to airport.Compared with sea transportation, costs are relatively higher,but it has high efficiency with about five working days.If the goods weight is more than 180kgs and you also want to receive the goods in short time, we suggest this way.

Express: It is shipped from door to door ,it is very quickly with about 5 working days,and intimate service.Normally if the goods weight is lower than 180kgs , we suggest this way.

If you have any concerns about it ,you can contact us now by email [sales@cheef.cn](mailto:sales@cheef.cn) <<mailto:sales@cheef.cn>>

3. When you receive the items you ordered, please check it carefully.Please contact us directly if you have any problems.

4. If you have not got it within the shipping time,please contact us without hesitation. We will check it for you immediately.



# Часто задаваемые вопросы

## **Q1: как заказать запчасти?**

А: Дайте нам модель запасных частей или фотографий.

## **Q2: Все запчасти для принтеров у вас есть?**

А: мы уже занимаемся этой отраслью уже более 10 лет. По большей части мы можем вам помочь!

## **Q3: совместимы ли эти запчасти для наших струйных принтеров?**

А: Да, не волнуйтесь, может совместимо для принтеров идеально.

Мы уже тестировали, прежде чем продавать на рынке.

## **Q4: я могу попробовать образец?**

А: Да, конечно, вы можете попробовать образец и сделать тест до оптового заказа.

## **Q5: кроме запасных частей на вашем сайте, есть ли у вас другие запчасти?**

О: Да, конечно, поскольку у принтеров каждой марки есть более сотни запасных частей, мы не перечисляем все, поэтому вы можете связаться с нами и предоставить нам список необходимых вам запасных частей, и мы процитируем вам соответственно.

## **Q6: Кроме запасных частей для принтеров, какие другие продукты вы предоставляете?**

А: Да, мы предоставляем чернила, макияж и принтеры, а также подержанные фирменные принтеры.

Вы можете связаться с нами для запроса сейчас.

## **Q7: кроме как предоставить продукты, какие услуги вы можете предоставить с нами?**

А: Если вам нужна техническая поддержка, и мы можем помочь вам, мы уже занимаемся этой отраслью уже более 10 лет.

## **Q8: как мы можем связаться с вами?**

А: Пожалуйста, отправьте запрос нам сейчас, как показано ниже, или отправьте нам письмо.



**86-512-6281-0865**



**86-138-620-19623**



**86-512-6730-1180**



**SALES@CHEEF.CN**