

Product classification



Domino



DOD



Hitachi



Linx



Metronic



Videojet

Parâmetro de produto

Videoj et, Will ett

Brand	Item name	Model	Specification
	ink	V410-D/V411-D	750ml/bottle
	solvent	V705-D/V706-D	751ml/bottle
	ink	V490-C/V480-C	752ml/bottle
	solvent	V720-D/V721-D	753ml/bottle
	ink	V491-C	754ml/bottle
	wash	V901-Q	1000ml/bottle
	ink	201-0001-601	1000ml/bottle
	solvent	201-0001-701	1000ml/bottle
	ink	V403-D	750ml/bottle
	ink	V404-D	750ml/bottle
	ink	V437-D	750ml/bottle
	ink	V451-D	750ml/bottle
	ink	V459-D	750ml/bottle
	ink	V460-D	750ml/bottle
	solvent	V730-D	food grade solvent Make-Up, 750 ml
	solvent	V731-D	bottle, 750 ml
	solvent	V732-D	food grade solvent, 750 ml
	solvent	V752-D	bottle, 750 ml
	solvent	V753-D	bottle, 750 ml
	solvent	V754-D	bottle, 750 ml
	solvent	V752-K	bottle, 5L
	ink	SP16-2520Q	1000ml/bottle
	ink	SP16-2960Q	1000ml/bottle
	ink	SP16-5600Q	1000ml/bottle
	ink	SP16-8300Q	1000ml/bottle
	ink	SP16-8600Q	1000ml/bottle
	solvent	SP16-2525Q	1000ml/bottle
	solvent	SP16-2965Q	1000ml/bottle
	solvent	SP16-5605Q	1000ml/bottle
	solvent	SP16-8535Q	1000ml/bottle
	solvent	SP16-8605Q	1000ml/bottle
	wash	SP16-3500Q	1000ml/bottle
	wash	SP16-3801Q	1000ml/bottle
	wash	SP16-9011Q	1000ml/bottle
	large character	M210-F	5gallon,about18.9 liters
		M940-Q	1L

[Imajes detalhada](#)







Aplicação

Industrial Applications

Our ink is mainly used for famous brand of cij printer like domino, hitachi , imaje, linx , citronix and so on. Our inkjet inks can be used for a variety of applications, such as the industry of cables, electronics, pipes, plastic, pharmaceutical, construction and so on



ONE
WIRE AND CABLE INDUSTRY



TWO

ELECTRONICS INDUSTRY



THREE

PIPE INDUSTRY



FOUR

PLASTIC INDUSTRY



FIVE

DRUG INDUSTRY



Embalagem & envio

Product packaging



Informações sobre a empresa

COMPANY INFORMATION



One hundred years only do one thing, to provide the best quality and economical ink for all over the world's inkjet printers

At cheef we possess a well-equipped Research and Development facility alongside substantial internal resources to offer custom-made products for specific request. Our core priority is competitive cost with high quality products and fast service.





Test reports and Certifications

SGS

測試報告 No. SHAC0000002 (CN 2019061001) 報告日期

客戶名稱
客戶地址

UTM11444444444444444444 00
物料名稱: SP000000-04
客戶: 7M 建築有限公司
地址: 中國
樣品編號: 2019061001
日期: 20190610-20190610
測試: 6837-0000
測試: 6837-0000
地址: 中國
地址: 中國
地址: 中國

檢驗員姓名
簽名

SGS 檢驗員姓名
SGS 檢驗員姓名

SGS 檢驗員姓名
SGS 檢驗員姓名

SGS

測試報告 No. SHAC0000002 (CN 2019061001) 報告日期

測試項目
測試項目
測試項目

測試項目
測試項目
測試項目

測試項目

SGS 檢驗員姓名
SGS 檢驗員姓名

SGS

測試報告 No. SHAC0000002 (CN 2019061001) 報告日期

測試項目

測試項目
測試項目

測試項目
測試項目
測試項目

測試項目
測試項目
測試項目
測試項目
測試項目

測試項目	單位	結果	規格	備註
SGR	100 mg/kg	2	ND	
SPB	1000 mg/kg	2	ND	
SPM	1000 mg/kg	2	ND	
SPD	1000 mg/kg	2	ND	
SPC	1000 mg/kg	2	ND	
SPB+C+PM	1000 mg/kg	2	ND	
SPB	-	mg/kg	5	ND
SPC	-	mg/kg	5	ND
SPD	-	mg/kg	5	ND
SPM	-	mg/kg	5	ND
SPB+C	-	mg/kg	5	ND
SPB+C+PM	-	mg/kg	5	ND
SPB	-	mg/kg	5	ND
SPC	-	mg/kg	5	ND
SPD	-	mg/kg	5	ND
SPM	-	mg/kg	5	ND
SPB+C+PM	1000	mg/kg	5	ND
SPB	-	mg/kg	5	ND

SGS 檢驗員姓名
SGS 檢驗員姓名

SGS

測試報告 No. SHAC0000002 (CN 2019061001) 報告日期

測試項目
測試項目

測試項目
測試項目

測試項目
測試項目
測試項目
測試項目

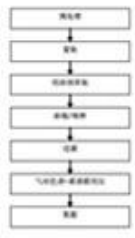
測試項目	單位	結果	規格	備註
SGR	100 mg/kg	2	ND	
SPB	1000 mg/kg	2	ND	
SPM	1000 mg/kg	2	ND	
SPD	1000 mg/kg	2	ND	
SPC	1000 mg/kg	2	ND	
SPB+C+PM	1000 mg/kg	2	ND	
SPB	-	mg/kg	5	ND
SPC	-	mg/kg	5	ND
SPD	-	mg/kg	5	ND
SPM	-	mg/kg	5	ND
SPB+C	-	mg/kg	5	ND
SPB+C+PM	-	mg/kg	5	ND
SPB	-	mg/kg	5	ND
SPC	-	mg/kg	5	ND
SPD	-	mg/kg	5	ND
SPM	-	mg/kg	5	ND
SPB+C+PM	1000	mg/kg	5	ND
SPB	-	mg/kg	5	ND

SGS 檢驗員姓名
SGS 檢驗員姓名

SGS

測試報告 No. SHAC0000002 (CN 2019061001) 報告日期

測試項目

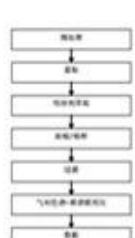


SGS 檢驗員姓名
SGS 檢驗員姓名

SGS

測試報告 No. SHAC0000002 (CN 2019061001) 報告日期

測試項目



SGS 檢驗員姓名
SGS 檢驗員姓名

SGS

測試報告 No. SHAC0000002 (CN 2019061001) 報告日期

測試項目
測試項目

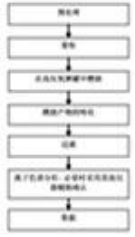


SGS 檢驗員姓名
SGS 檢驗員姓名

SGS

測試報告 No. SHAC0000002 (CN 2019061001) 報告日期

測試項目



SGS 檢驗員姓名
SGS 檢驗員姓名

SGS

測試報告 No. SHAC0000002 (CN 2019061001) 報告日期



測試項目

SGS 檢驗員姓名
SGS 檢驗員姓名

Por que nos escolher

Why choose us

High quality

Quality is crucial to our business and is the fundamental reason for our success. The high quality is both in the fluids and the service that we provide to our customers and distributors. Only the highest quality raw materials and the control of the manufacturing process, can ensure each batch in the same from the first to the last .

Owr products have exceptional stability and good adhesion om various substrates including low surface energy plastics, metals, pipes & tubes, cables & wires etc.



Competitive price

Our goal is to provide our agent with high quality products at competitive prices. In order to keep prices as competitive as possible without compromising product quality, we work very hard. We have developed a close relationship with our distributors who can always offer the high quality products and the most competitive as far as possible. At chief we are proud of that we can be able to provide our customers with the products have great quality and a low price.

Fast Service

We understand that our distributors' brand and reputation is extremely important. Because of this , we are happy to private labels for our distributors. So we provide our costumers after-sales service for free.



Pagamento e envio

Payment and Shipment

Payment

1. Generally, we accept the following payment methods: T/T; Western Union; paypal. T/T; western union. And our protection only gives the payment ways accepted by Alibaba Trade Assurance.



Shipment

1. We will sent the items within 5days (working days, Not holiday sea for ink and about 15days for machine after receiving your payment.

2.The shipment is always by Express , air or sea .

Sea transportation: It is used for large volume of products.It is shipped from port to port.

It is the most economical shipment way, we suggest this with order more than 1cbm, the unit cost will be the cheapest.

Air transportation:It is shipped from airport to airport.Compared with sea transportation, costs are relatively higher,but it has high efficiency with about five working days.If the goods weight is more than 180kgs and you also want to receive the goods in short time, we suggest this way.

Express: It is shipped from door to door ,it is very quickly with about 5 working days,and intimate service.Normally if the goods weight is lower than 180kgs , we suggest this way.

If you have any concerns about it ,you can contact us now by email sales@cheef.cn <<mailto:sales@cheef.cn>>

3. When you receive the items you ordered, please check it carefully.Please contact us directly if you have any problems.

4. If you have not got it within the shipping time,please contact us without hesitation. We will check it for you immediately.



Perguntas Frequentes

Q1:What is your main products of ink?

A:Cheef ink manufactures a full line of high quality, low cost alternative inks, makeup, and cleaners for Continuous Ink Jet (CIJ), Drop on Demand (DOD) and High-Resolution industrial printers and coders. Innovative technology is the core of our business, and our inks are trusted alternatives to products from many OEMs including Videojet, Domino, Imaje, Marsh, Citronix, Linx ,Metronic,Rottweil,and more.

Q2:Which products your ink can be used ?

A:Cheef ink can used on metal, glass, PVC, other plastics, and laminated paper with pigmented inks for use on darker substrates and available in white, gray, silver, and light blue,and so on.

Q3:Which industry of your ink used?

A:Cheef inks are used in a wide variety of industries for many different applications, including the automotive, food, beverage, electronic, consumer products, wire cable, pharmaceutical Industries and so on.

Q4:Is your ink compatible?

A:Yes ,cheef ink can develop the inks for use in your current coding and marking equipment. Whether the ink you've been using is out of stock, been discontinued, too costly or under performing, we can replicate and improve upon OEM manufactured ink. The most important is these inks are guaranteed compatible with your equipment. Just change out the ink, possibly run a flush, and you're ready to go.

Q5:How is your ink quality?

A:All of our inks are developed in our on-site lab which enables us to design and manufacture inks and fluids for the most difficult applications. We use only the highest quality dyes, pigments and materials in our inks.Our Custom ink successfully cover the most demanding manufacturing requirements. Our dye-based CIJ inks is suitable for most applications and is available in a vast range of solvents and colors.

Q6:How many colors of your ink?

A:We can produce the ink according to your request , and customize your color of ink, and make your own private label.
Our soft-pigmented CIJ inks deliver codes in intense colors such as yellow, red, and green, using a standard printer.

Como nos contatar

**RETURN
HOME**

**IF YOU WANT TO CHECK OUR HOME PAGE
PLEASE CLICK HERE.**

CONTACT US AND INQUIRY NOW



86-512-6281-0865



86-512-6730-1180



86-138-620-19623



SALES@CHEEF.CN