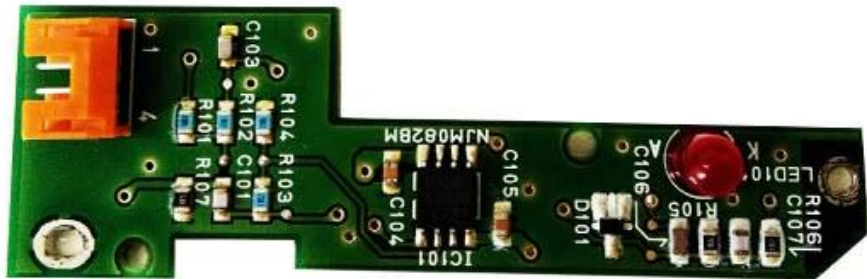


| | |
|------------------|---|
| Bahagi HINDI. | 451285 |
| Parteng pangalan | nozzle phase detection board |
| Tugma sa | Para sa Hitachi H-type na PX PXR PB / T |



CHEEF INKJET PRINTER SPARE PARTS



For Hitachi inkjet printer spare parts

| Product Name | Mold Number | Product Name | Mold Number |
|---|-------------|---|-------------|
| MAIN FILTER (PB/PX/PXR) | 451590 | HEAT FIXED BLOCK FOR HITACHI | PC1637 |
| GUTTER FILTER PART FOR HITACHI | 451037 | HEATER COVER | PC1638 |
| PUMP MEMBRANE FOR HITACHI | 451586 | MAGNET- HOLSTER FOR PB/PXR/RX | 451333 |
| FILTERS KIT(PB/PX/PXR) | PG0244 | MIXING TANK GASKET (PX PXR PB RX) | PC1681 |
| MV9 VALVE FILTER FORHITACHI | 451518 | HITACHI PRESSORSENSOR | 451629 |
| 55U NOZZLE FORHITACHI | 451694 | MAKE-UP DETECTOR | PC1709 |
| FIXED COVER OF LEVEL SENSOR | 451755 | INK LEVEL SENSOR | PC1708 |
| REAR COVER FOR PX | 451612 | CHARGE ELECTRODE FOR HITACHIPB | 451608 |
| REAR COVER FOR RX | 451938 | HITACHI FILTER75R | 451858 |
| FRONT COVER FOR RX | 451914 | DEFLECTOR FOR HITACHI RX/PX | PC1718 |
| LCD MODEL USED FOR HITACHIPX-R | PC1483 | REAR AIR FILTER FORHITACHI | 451641 |
| TOUCH PANEL MODEL HITACHIPX-R | PC1485 | PRINT HEAD FRONT COVER MODEL | 451710 |
| 65 MICRON NOZZLE | 451670 | GUTTER BASE ASSEMBLY 40MICROM | 451711 |
| GUTTER TUBE CLAMP KIT USED FOR | 451603 | MAKEUP/INKFILTERFORHITACHIPXR/ | 451487 |
| AIR FILTERASSY | 451594 | MOVABLE COVER KIT FOR SOLENOID | 451587-TX |
| MAKE-UP LEVEL SENSOR FORHITACH | PC1503 | NEGATIVE PLATE FORPX(40u) | 451716 |
| HOLDER FOR FILTER(WITHOUT FILT | 451633 | POSITIVE PLATE FOR PX(40u) | 451719 |
| NUT FOR HOLDER | 451635 | SOLENOID VALVE (MV8) | 451626 |
| HEATER FRONT COVER FOR HITACHI PX/PXR/P | 451614 | Fefron Tube 3mm | 451064 |
| 451453 PRESSURE RECLUCING VALV | 451453 | MV9 VALVE FOR HITACHI | 451476 |
| AIR FITLER FOR HITACHI RX | 451947 | Cover of Mixing Tank For PXR/R | PL2271 |
| CONNECTOR ASSY FOR HITACHI RXM | PG0289 | MOVABLE COVER KIT FOR PX/PB/RX | 451626-TX |
| INK TANK FLOAT SENSOR | 451735 | TOUCH PANEL (RX) | 451849 |
| Gutter Base Assembly RX | 451869 | REAR CAVER PACKING PARTS | 451617 |
| VALVE SOLENOIDDIAPHRAGM | 451626-MO | FAN SUB ASSEMBLY (4710KL) | 451640 |
| CAP, TANK | 451833 | COVER SWITCH SUB-ASSEMBLY K | 451473 |
| 40 MICRON NOZZLE | 451646 | MOVABLE CORE KIT FOR SOLENOID VALVE (MV1-MV7) | 451587 |
| FILTER JOINTASSY | 451636 | PRINthead FILTER RX | 451852 |
| ICU JOINT PARTS | 451630 | MIXING TANK FOR HITACHIRX/PB | 451501 |
| MAIN FILTER (KX/HX) | 451167 | PB TOUCH SCREEN | PC1362 |
| HOLSTER STD PX | PC1633 | FIXED COVER OF LEVEL SENSOR | PC1444 |
| CONNECTOR FIXED BLOCK FOR HITACHI | PC1636 | AIR FITLER FOR HITACHIRX | PC1573 |

COMPANY INFORMATION



One hundred years only do one thing, to provide the best quality and economical ink for all over the world's inkjet printers

At cheef we possess a well-equipped Research and Development facility alongside substantial internal resources to offer custom-made products for specific request. Our core priority is competitive cost with high quality products and fast service.





Payment and Shipment

Payment

1. Generally, we accept the following payment methods: T/T; Western Union; paypal. T/T; western union. And our protection only gives the payment ways accepted by Alibaba Trade Assurance.



Shipment

1. We will sent the items within 5days (working days, Not holiday sea for ink and about 15days for machine after receiving your payment.

2.The shipment is always by Express , air or sea .

Sea transportation: It is used for large volume of products.It is shipped from port to port.

It is the most economical shipment way, we suggest this with order more than 1cbm, the unit cost will be the cheapest.

Air transportation:It is shipped from airport to airport.Compared with sea transportation, costs are relatively higher,but it has high efficiency with about five working days.If the goods weight is more than 180kgs and you also want to receive the goods in short time, we suggest this way.

Express: It is shipped from door to door ,it is very quickly with about 5 working days,and intimate service.Normally if the goods weight is lower than 180kgs , we suggest this way.

If you have any concerns about it ,you can contact us now by email sales@cheef.cn <<mailto:sales@cheef.cn>>

3. When you receive the items you ordered, please check it carefully.Please contact us directly if you have any problems.

4. If you have not got it within the shipping time,please contact us without hesitation. We will check it for you immediately.



FAQ

Q1: Paano mag-order ng ekstrang bahagi?

A: Bigyan kami ng modelo ng mga ekstrang bahagi o larawan.

Q2: Ang lahat ng ekstrang bahagi para sa mga printer na mayroon ka?

A: ginagawa na namin ang industriyang ito nang higit sa 10years. Para sa karamihan ng mga bahagi, makakatulong kami sa iyo!

Q3: Ang mga ekstrang bahagi ba ay katugma para sa aming mga inkjet printer?

A: Oo, huwag mag-alala, maaaring magkatugma para sa perpekto ng mga printer.

Nasubukan na namin bago ibenta sa merkado.

Q4: Maaari ba akong subukan ang sample?

A: Oo, sigurado, maaari mong subukan ang sample at gawin ang pagsubok bago ang pagkakasunud-sunod ng bulk.

Q5: Maliban sa mga ekstrang bahagi sa iyong website, mayroon ka bang iba pang mga ekstrang bahagi?

A: Oo, sigurado, dahil ang bawat tatak ng mga printer ay may maraming daan-daang mga ekstrang bahagi, hindi namin nakalista ang lahat, kaya maaari kang makipag-ugnay sa amin at bigyan kami ng listahan ng mga ekstrang bahagi na kailangan mo, at binanggit namin sa iyo nang naaayon.

Q6: Maliban sa mga ekstrang bahagi para sa mga printer, alin sa ibang mga produkto ang ibinibigay mo?

A: Oo, nagbibigay kami ng tinta, bumubuo at mga printer, at mga printer ng pangalawang kamay.

Maaari kang makipag-ugnay sa amin para sa pagtatanong ngayon.

Q7: Maliban sa magbigay ng mga produkto kung anong serbisyo ang maaring ibigay sa amin?

A: Kung kailangan mo ng ilang teknikal na suporta, at makakatulong kami sa iyo, ginagawa na namin ang industriya na ito nang higit sa 10 taon.

Q8: Paano kami makikipag-ugnay sa iyo?

A: Mangyaring ipadala ang pagtatanong sa amin ngayon tulad ng sa ibaba o ipadala sa amin ang email.



86-512-6281-0865



86-138-620-19623



86-512-6730-1180



SALES@CHEEF.CN