

Product classification



Domino



DOD



Hitachi



Linx



Metronic



Videojet

[detalyadong Imajes](#)





application

Industrial Applications

Our ink is mainly used for famous brand of cij printer like domino, hitachi , imaje, linx , citronix and so on. Our inkjet inks can be used for a variety of applications, such as the industry of cables, electronics, pipes, plastic, pharmaceutical, construction and so on



ONE
WIRE AND CABLE INDUSTRY



TWO

ELECTRONICS INDUSTRY



THREE

PIPE INDUSTRY



FOUR

PLASTIC INDUSTRY



FIVE

DRUG INDUSTRY



Packaging & Pagpapadala

Product packaging



Impormasyon ng kumpanya

COMPANY INFORMATION



One hundred years only do one thing, to provide the best quality and economical ink for all over the world's inkjet printers

At cheef we possess a well-equipped Research and Development facility alongside substantial internal resources to offer custom-made products for specific request. Our core priority is competitive cost with high quality products and fast service.





Test reports and Certifications

SGS

測試報告 No. SHAC0000002 (CN 2019061001) 報告日期

客戶名稱
客戶地址

UTM試驗機
測試項目: SP000000_04
客戶: 中國建築材料
地址: 中國廣東省
日期: 20190610-20190610
測試: 鋼筋拉伸
測試: 鋼筋彎曲
測試: 鋼筋沖擊
備註: 鋼筋拉伸試驗, 鋼筋彎曲試驗, 鋼筋沖擊試驗

測試結果
合格

客戶簽名
客戶蓋章

SGS 檢驗有限公司 中國廣東省
SGS 檢驗有限公司 中國廣東省



SGS

測試報告 No. SHAC0000002 (CN 2019061001) 報告日期

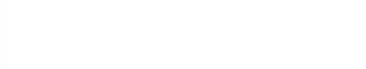
測試項目: 鋼筋
測試項目: 鋼筋 (NDP)
測試項目: 鋼筋 (NDP)
測試項目: 鋼筋 (NDP)

備註: (1) 鋼筋拉伸試驗 (2) 鋼筋彎曲試驗 (3) 鋼筋沖擊試驗 (4) 鋼筋拉伸試驗 (5) 鋼筋彎曲試驗 (6) 鋼筋沖擊試驗

測試結果
合格

客戶簽名
客戶蓋章

SGS 檢驗有限公司 中國廣東省
SGS 檢驗有限公司 中國廣東省



SGS

測試報告 No. SHAC0000002 (CN 2019061001) 報告日期

測試項目: 鋼筋
測試項目: 鋼筋 (NDP)
測試項目: 鋼筋 (NDP)
測試項目: 鋼筋 (NDP)

備註: (1) 鋼筋拉伸試驗 (2) 鋼筋彎曲試驗 (3) 鋼筋沖擊試驗 (4) 鋼筋拉伸試驗 (5) 鋼筋彎曲試驗 (6) 鋼筋沖擊試驗

測試結果
合格

客戶簽名
客戶蓋章

SGS 檢驗有限公司 中國廣東省
SGS 檢驗有限公司 中國廣東省



SGS

測試報告 No. SHAC0000002 (CN 2019061001) 報告日期

測試結果
合格

客戶簽名
客戶蓋章

SGS 檢驗有限公司 中國廣東省
SGS 檢驗有限公司 中國廣東省



SGS

測試報告 No. SHAC0000002 (CN 2019061001) 報告日期

測試項目: 鋼筋
測試項目: 鋼筋 (NDP)
測試項目: 鋼筋 (NDP)
測試項目: 鋼筋 (NDP)

備註: (1) 鋼筋拉伸試驗 (2) 鋼筋彎曲試驗 (3) 鋼筋沖擊試驗 (4) 鋼筋拉伸試驗 (5) 鋼筋彎曲試驗 (6) 鋼筋沖擊試驗

測試結果
合格

客戶簽名
客戶蓋章

SGS 檢驗有限公司 中國廣東省
SGS 檢驗有限公司 中國廣東省



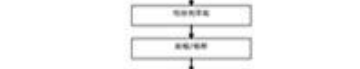
SGS

測試報告 No. SHAC0000002 (CN 2019061001) 報告日期

測試結果
合格

客戶簽名
客戶蓋章

SGS 檢驗有限公司 中國廣東省
SGS 檢驗有限公司 中國廣東省



SGS

測試報告 No. SHAC0000002 (CN 2019061001) 報告日期

測試結果
合格

客戶簽名
客戶蓋章

SGS 檢驗有限公司 中國廣東省
SGS 檢驗有限公司 中國廣東省



SGS

測試報告 No. SHAC0000002 (CN 2019061001) 報告日期

測試項目: 鋼筋
測試項目: 鋼筋 (NDP)
測試項目: 鋼筋 (NDP)
測試項目: 鋼筋 (NDP)

備註: (1) 鋼筋拉伸試驗 (2) 鋼筋彎曲試驗 (3) 鋼筋沖擊試驗 (4) 鋼筋拉伸試驗 (5) 鋼筋彎曲試驗 (6) 鋼筋沖擊試驗

測試結果
合格

客戶簽名
客戶蓋章

SGS 檢驗有限公司 中國廣東省
SGS 檢驗有限公司 中國廣東省



SGS

測試報告 No. SHAC0000002 (CN 2019061001) 報告日期

測試結果
合格

客戶簽名
客戶蓋章

SGS 檢驗有限公司 中國廣東省
SGS 檢驗有限公司 中國廣東省



Bakit Pumili sa Amin

Why choose us

High quality ○

Quality is crucial to our business and is the fundamental reason for our success. The high quality is both in the fluids and the service that we provide to our customers and distributors. Only the highest quality raw materials and the control of the manufacturing process, can ensure each batch in the same from the first to the last .
Owr products have exceptional stability and good adhesion om various substrates including low surface energy plastics, metals, pipes & tubes, cables & wires etc.



Competitive price

Our goal is to provide our agent with high quality products at competitive prices. In order to keep prices as competitive as possible without compromising product quality, we work very hard. We have developed a close relationship with our distributors who can always offer the high quality products and the most competitive as far as possible. At cheef we are proud of that we can be able to provide our customers with the products have great quality and a low price.

Fast Service ○

We understand that our distributors' brand and reputation is extremely important. Because of this , we are happy to private labels for our distributors. So we provide our costumers after-sales service for free.



Pagbabayad at Pagpapadala

Payment and Shipment

Payment

1. Generally, we accept the following payment methods: T/T; Western Union; paypal. T/T; western union. And our protection only gives the payment ways accepted by Alibaba Trade Assurance.



Shipment

1. We will sent the items within 5days (working days, Not holiday sea for ink and about 15days for machine after receiving your payment.

2.The shipment is always by Express , air or sea .

Sea transportation: It is used for large volume of products.It is shipped from port to port.

It is the most economical shipment way, we suggest this with order more than 1cbm, the unit cost will be the cheapest.

Air transportation:It is shipped from airport to airport.Compared with sea transportation, costs are relatively higher,but it has high efficiency with about five working days.If the goods weight is more than 180kgs and you also want to receive the goods in short time, we suggest this way.

Express: It is shipped from door to door ,it is very quickly with about 5 working days,and intimate service.Normally if the goods weight is lower than 180kgs , we suggest this way.

If you have any concerns about it ,you can contact us now by email sales@cheef.cn <<mailto:sales@cheef.cn>>

3. When you receive the items you ordered, please check it carefully.Please contact us directly if you have any problems.

4. If you have not got it within the shipping time,please contact us without hesitation. We will check it for you immediately.



FAQ

FAQ

Q: I don't know your company well, how can I trust you?

A: Suzhou Cheef Technology Co., Ltd. is located in Suzhou, China. After established, we have gathered agents all over the world, for example, in USA, Canada, Pakistan, South Korea, Australia, India and Egypt, etc. Our company is strictly compliant with ISO9001-2008 quality system standards and has the awareness of sustainable development.

Q: How to pay?

A: We accept the Trade Assurance Order. Our company accepts different kinds of payment terms.

Q: How can I know if it is paid successfully?

A: We will send you a payment confirmation email upon receiving your payment.

Q: How to obtain the tracking number of shipment? And how to contact the carrier (express delivery company)?

A: We will send you the Bill of Lading or tracking number after shipping your items, hereby please keep on checking your email.

Q: If I still have questions to this product, what shall I do?

A: Please click "Inquire Now" below the page and submit your inquiry or questions, we will reply you as soon as possible, or email us by sales@cheef.cn

Paano makikipag-ugnayan sa amin

**RETURN
HOME**

**IF YOU WANT TO CHECK OUR HOME PAGE
PLEASE CLICK HERE.**

CONTACT US AND INQUIRY NOW



86-512-6281-0865



86-512-6730-1180



86-138-620-19623



SALES@CHEEF.CN