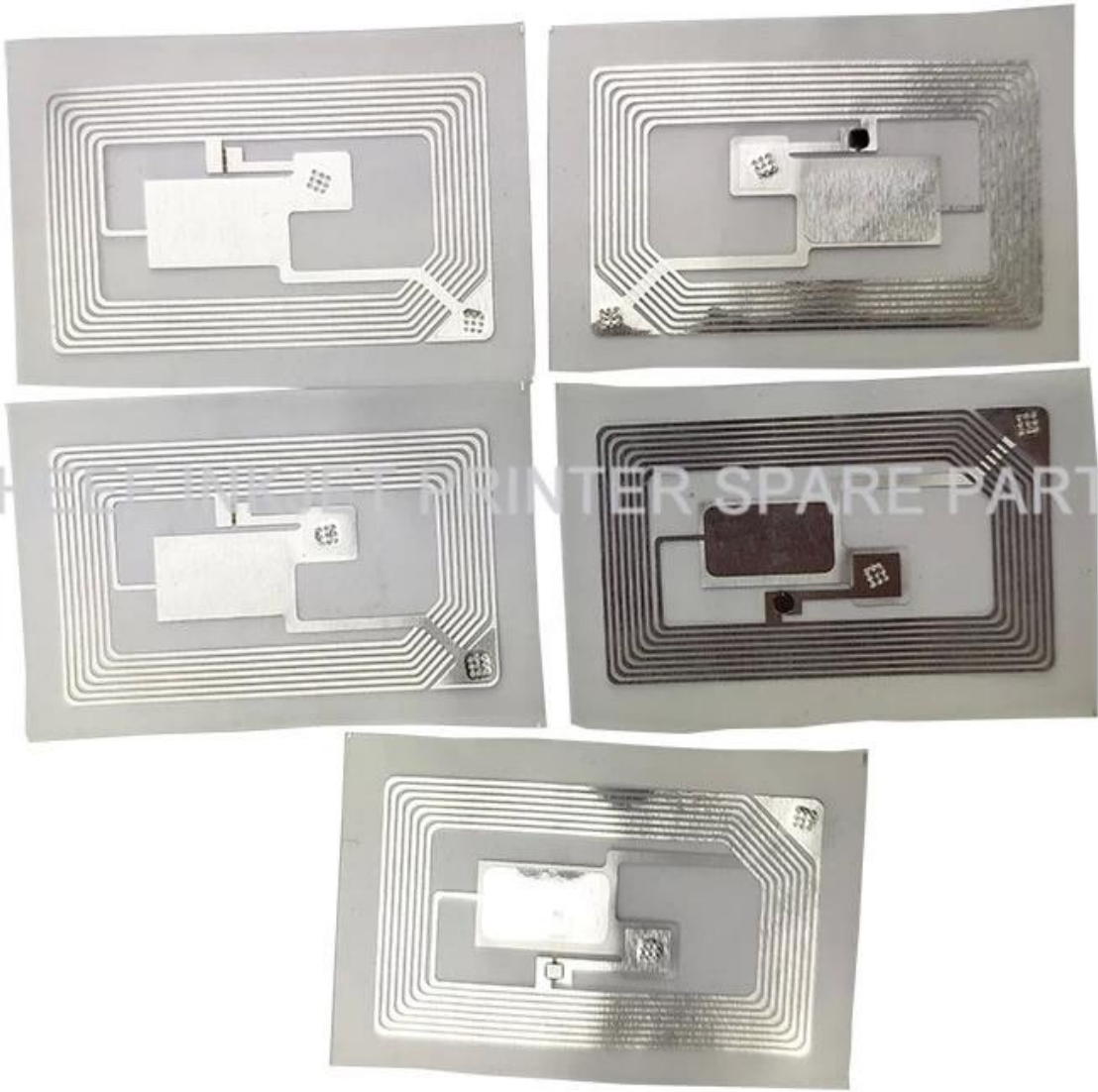


□□□□	70000-00030
□□□	□□□
□□□	□□□□□□□□□□□□



CHINA INKJET PRINTER SPARE PARTS

# COMPANY INFORMATION



One hundred years only do one thing, to provide the best quality and economical ink for all over the world's inkjet printers

At cheef we possess a well-equipped Research and Development facility alongside substantial internal resources to offer custom-made products for specific request. Our core priority is competitive cost with high quality products and fast service.





## Payment and Shipment

### Payment

1. Generally, we accept the following payment methods: T/T; Western Union; paypal. T/T; western union. And our protection only gives the payment ways accepted by Alibaba Trade Assurance.



## Shipment

1. We will sent the items within 5days (working days, Not holiday sea for ink and about 15days for machine after receiving your payment.

2.The shipment is always by Express , air or sea .

Sea transportation: It is used for large volume of products.It is shipped from port to port.

It is the most economical shipment way, we suggest this with order more than 1cbm, the unit cost will be the cheapest.

Air transportation:It is shipped from airport to airport.Compared with sea transportation, costs are relatively higher,but it has high efficiency with about five working days.If the goods weight is more than 180kgs and you also want to receive the goods in short time, we suggest this way.

Express: It is shipped from door to door ,it is very quickly with about 5 working days,and intimate service.Normally if the goods weight is lower than 180kgs , we suggest this way.

If you have any concerns about it ,you can contact us now by email [sales@cheef.cn](mailto:sales@cheef.cn) <<mailto:sales@cheef.cn>>

3. When you receive the items you ordered, please check it carefully.Please contact us directly if you have any problems.

4. If you have not got it within the shipping time,please contact us without hesitation. We will check it for you immediately.





**Q1** 请简述公司的发展历程。

A 公司成立于2010年，主要从事软件开发业务。

**Q2** 请简述公司的主要业务。

A 公司主要业务包括软件开发、系统集成、IT咨询等。

**Q3** 请简述公司的核心竞争力。

A 公司的核心竞争力在于技术实力和人才储备。

请简述公司的未来发展规划。

**Q4** 请简述公司的企业文化。

A 公司的企业文化是诚信、创新、合作、共赢。

**Q5** 请简述公司的财务状况。

A 公司财务状况良好，营业收入稳步增长，净利润持续扩大。

**Q6** 请简述公司的风险管理。

A 公司建立了完善的风险管理体系，能够有效识别和应对风险。

请简述公司的社会责任。

**Q7** 请简述公司的市场拓展策略。

A 公司市场拓展策略包括线上线下相结合，重点开拓新兴市场。

**Q8** 请简述公司的团队建设。

A 公司注重团队建设，通过培训和激励提高员工素质。

86-512-6281-0865  
86-138-620-19623  
86-512-6730-1180  
SALES@CHEEF.CN