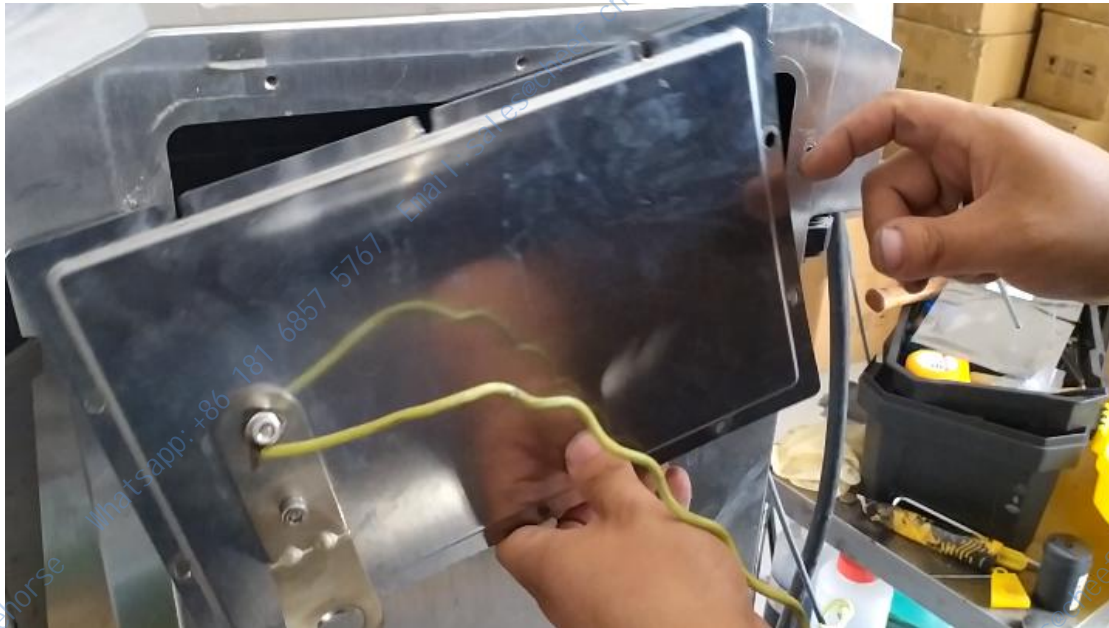


How to remove and install the power module and motherboard of Imaje 9232/9410/9450 inkjet printer?

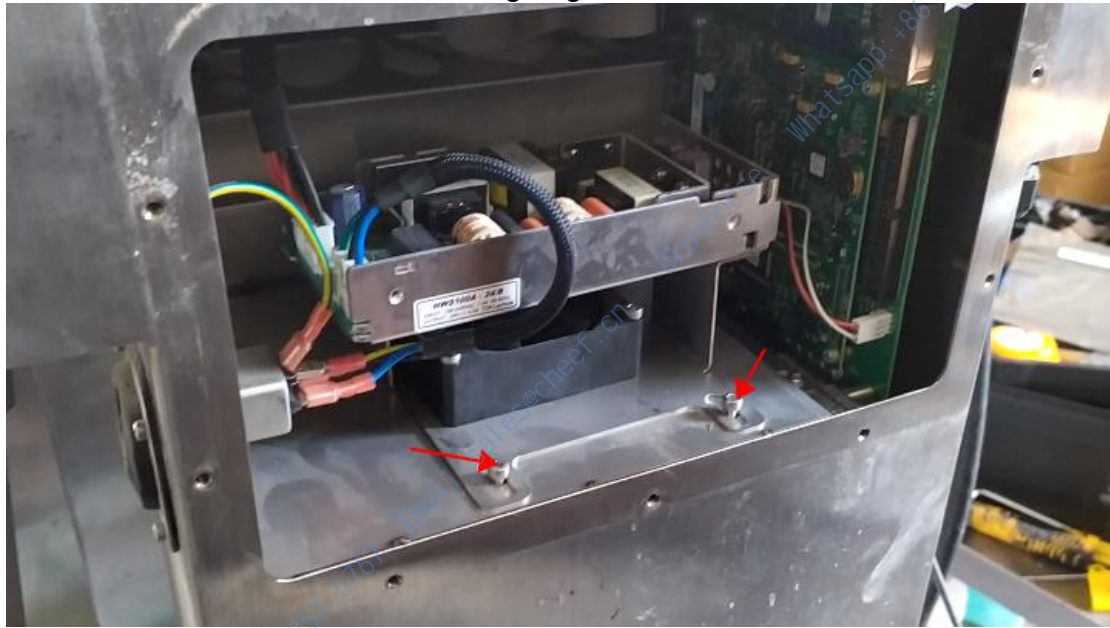
Take a look at how the power supply is disassembled,
First remove the screws around the lid, and then remove the lid:



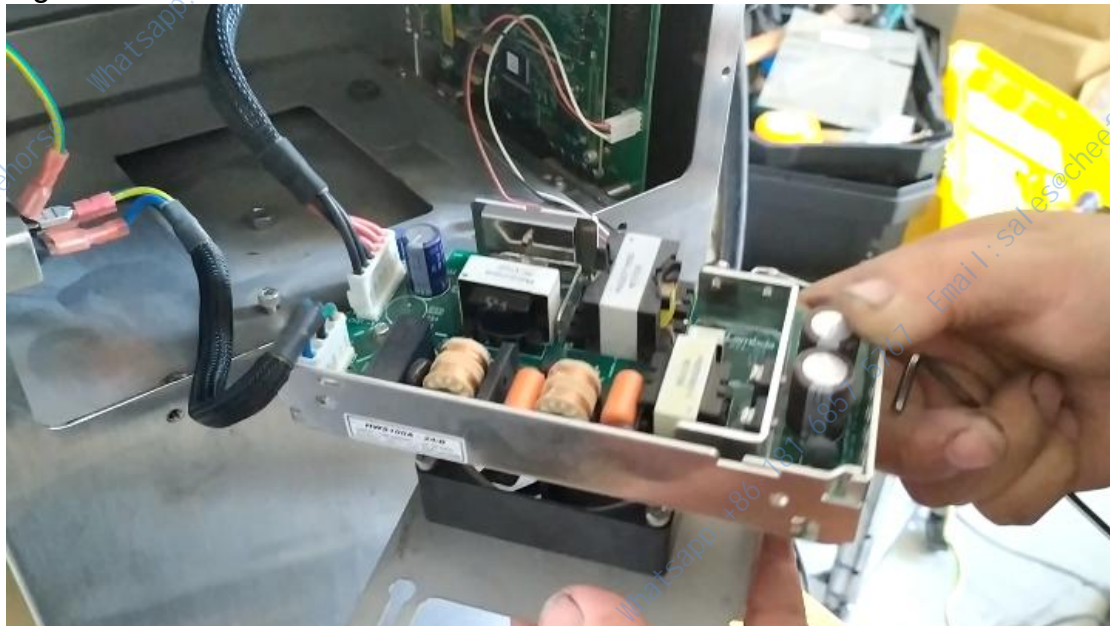
When the back cover is removed, all we see is the power supply:



To remove the motherboard, we're going to take the two screws off:

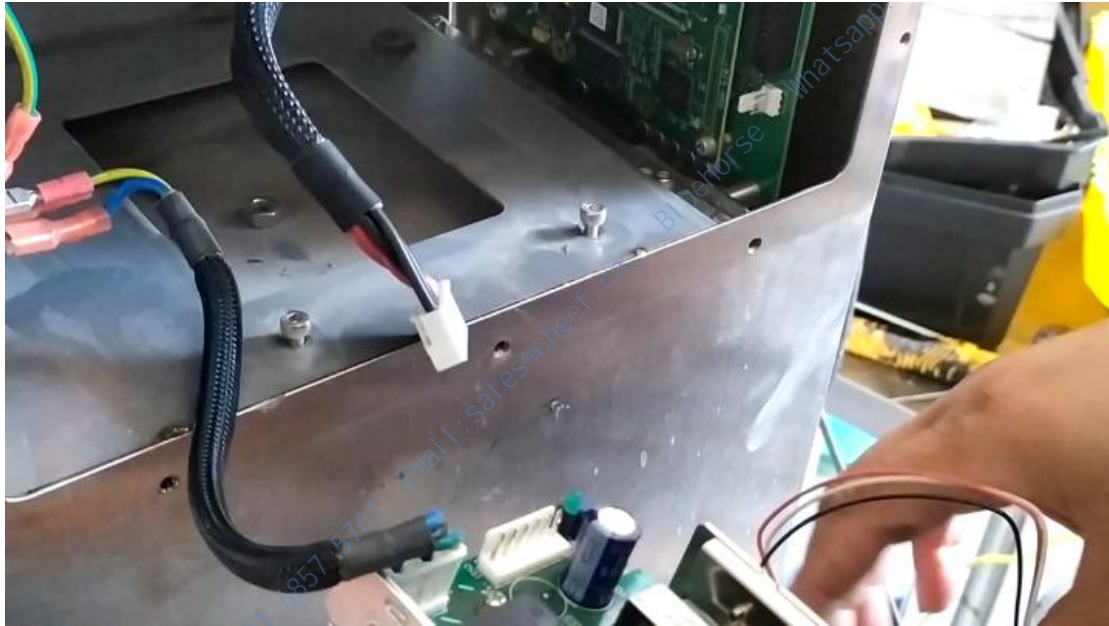


Then we take it out, this power supply includes fans, and we can take them off together:



Now as soon as you pull the wires above it, the power supply is removed.

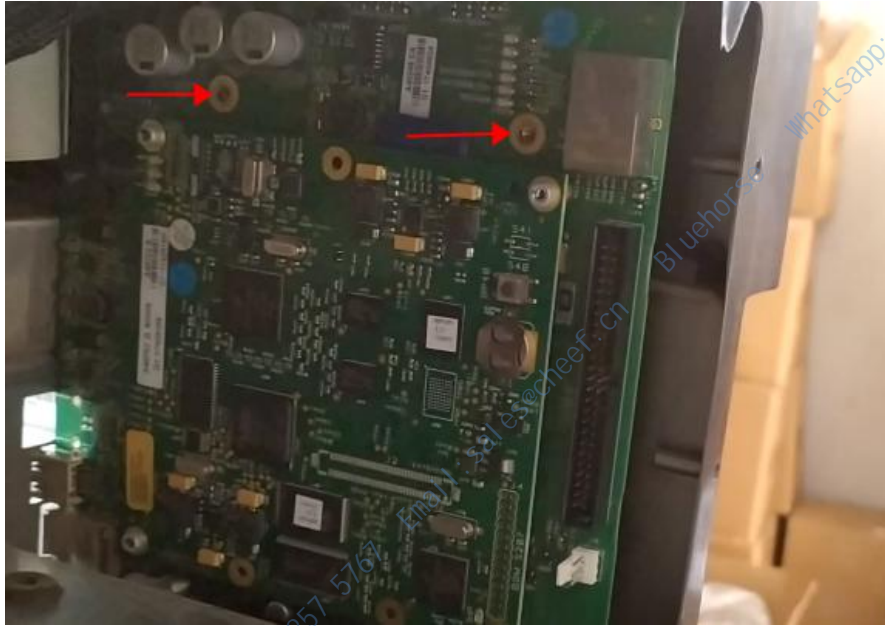
Let's see how the motherboard is removed,
First unplug all the wires connected to the motherboard:



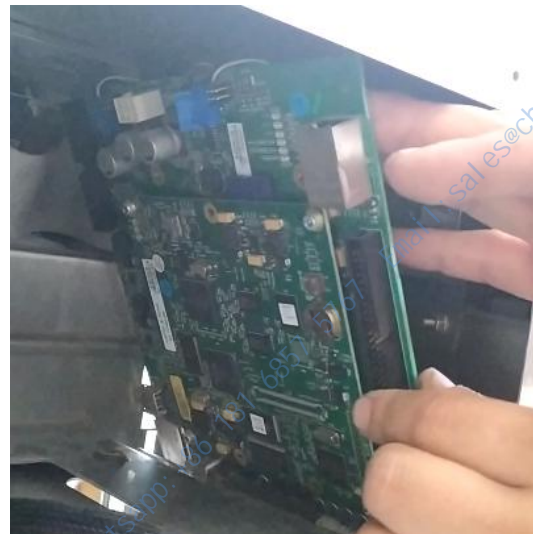
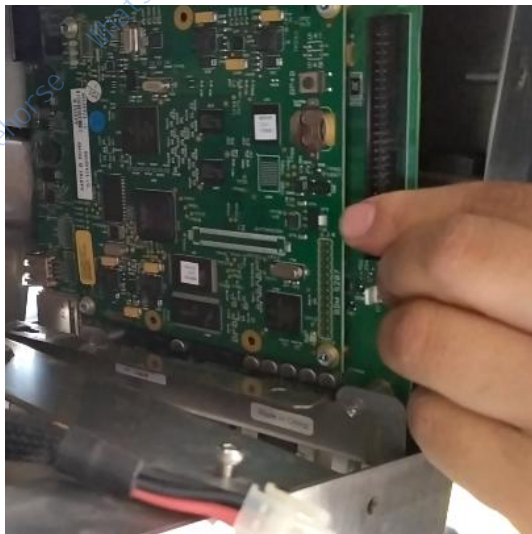
To remove the motherboard, we will loosen these two screws:



Then remove the two screws:



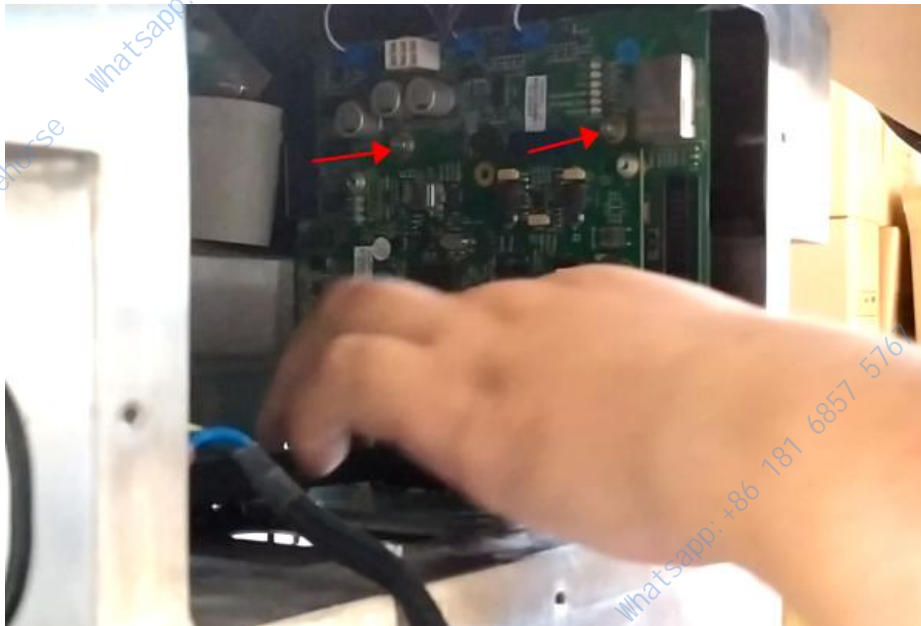
Pull out the lines inside, and the lines below the motherboard, and we can pull the line below the motherboard from the front, and after unplugging, we can take the motherboard out:



The same is true for the installation of the motherboard, first install the two screws:



Then install the two screws on the side:



Then plug in the wires on the motherboard and the motherboard is installed.