

## **How to assemble and install the valve module and print module of the printer head of Videojet 1000 series inkjet printer?**

How to install the valve module?

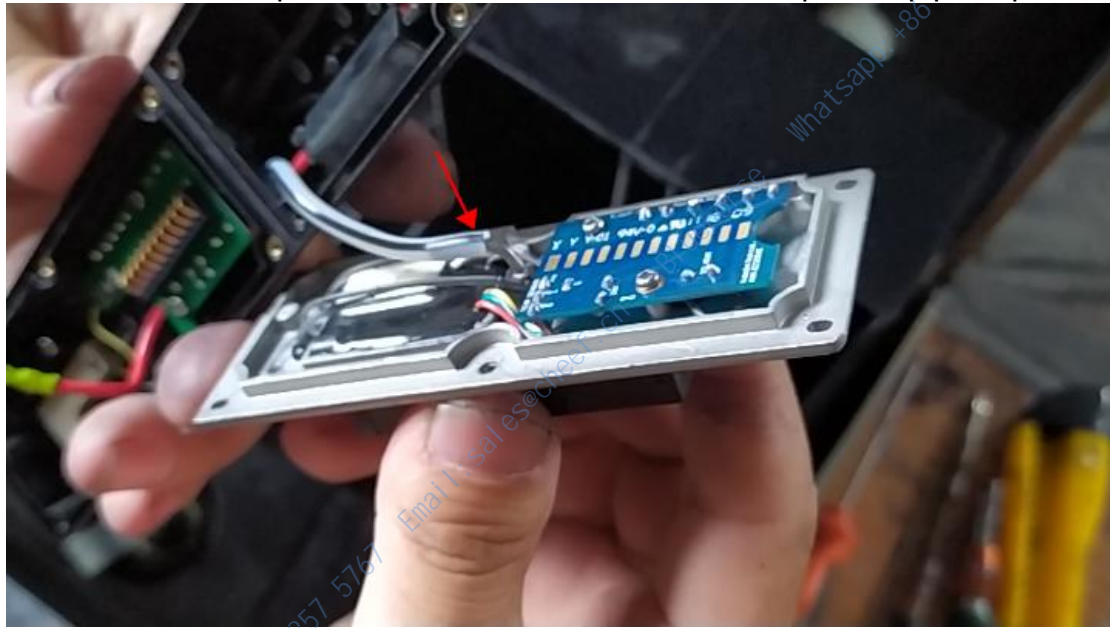
First of all, we install the solenoid valve, the washers above the solenoid valve must not be missing:



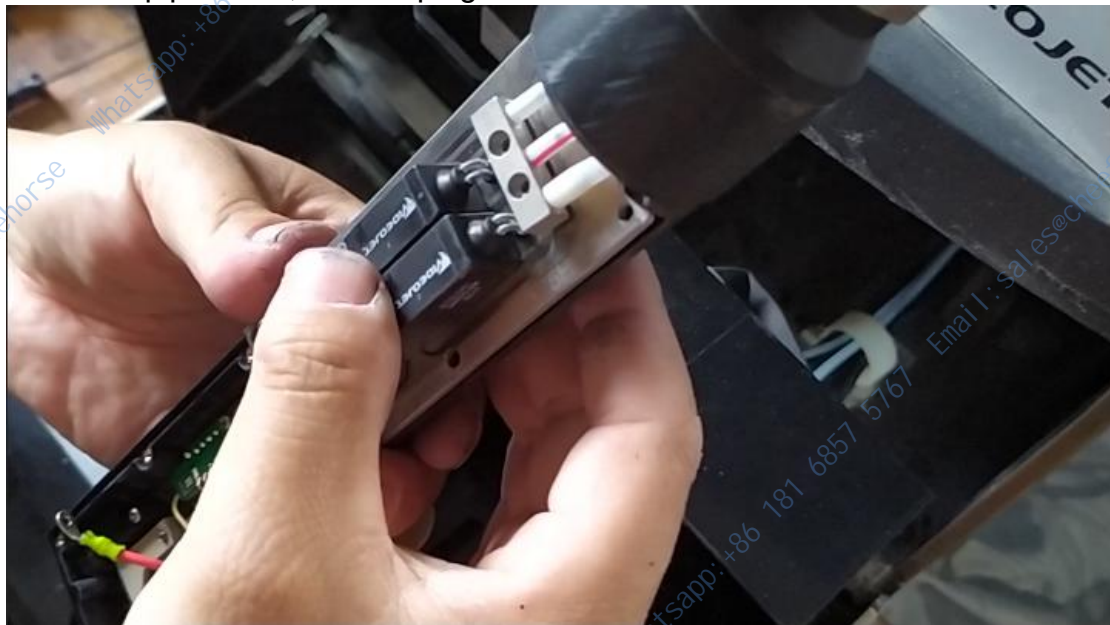
The solenoid valve is installed:



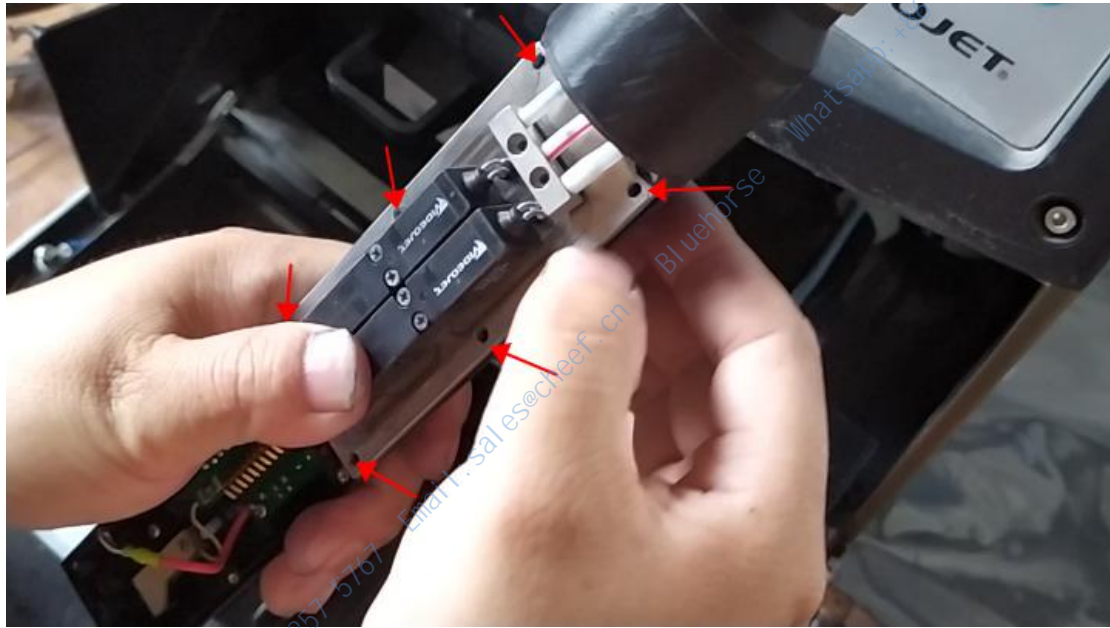
Once installed, we put this tube under the valve module, put the pipe in place:



Once the pipe is set, we can plug it in here:



Just install the six screws here:



We have installed this valve module:





Be sure to see if there are washers behind this one with three tubes:



Then we install it:



Let's install this print module:

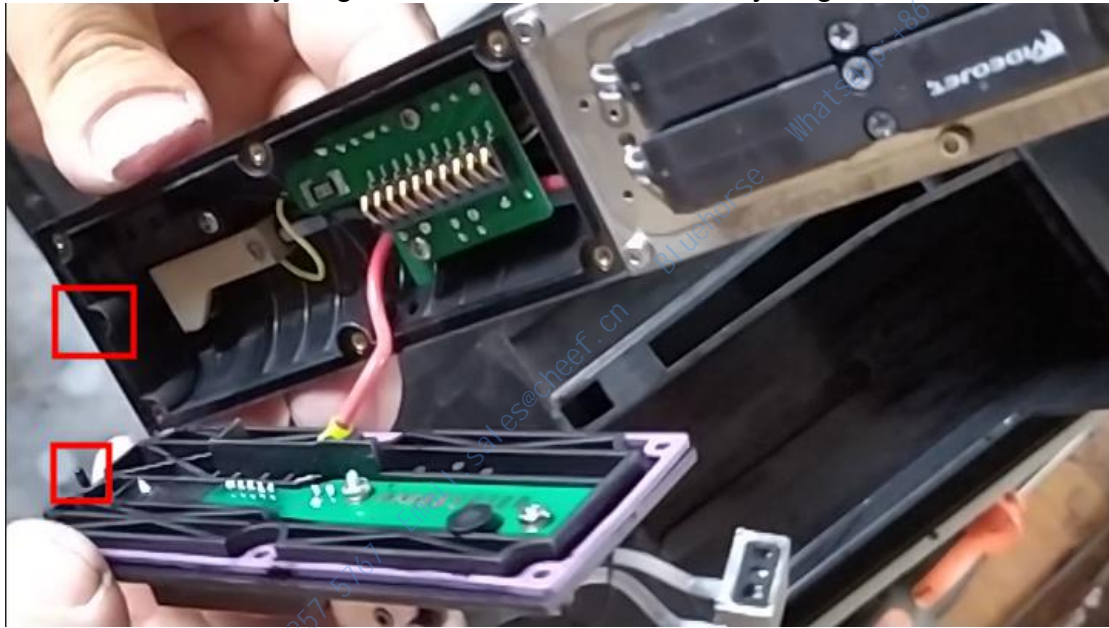


Connect it:





Then insert the recycling tank into this hole in the recycling tank:



Let's just install the screws:



Connect the ink supply pipe:



Installation complete:

