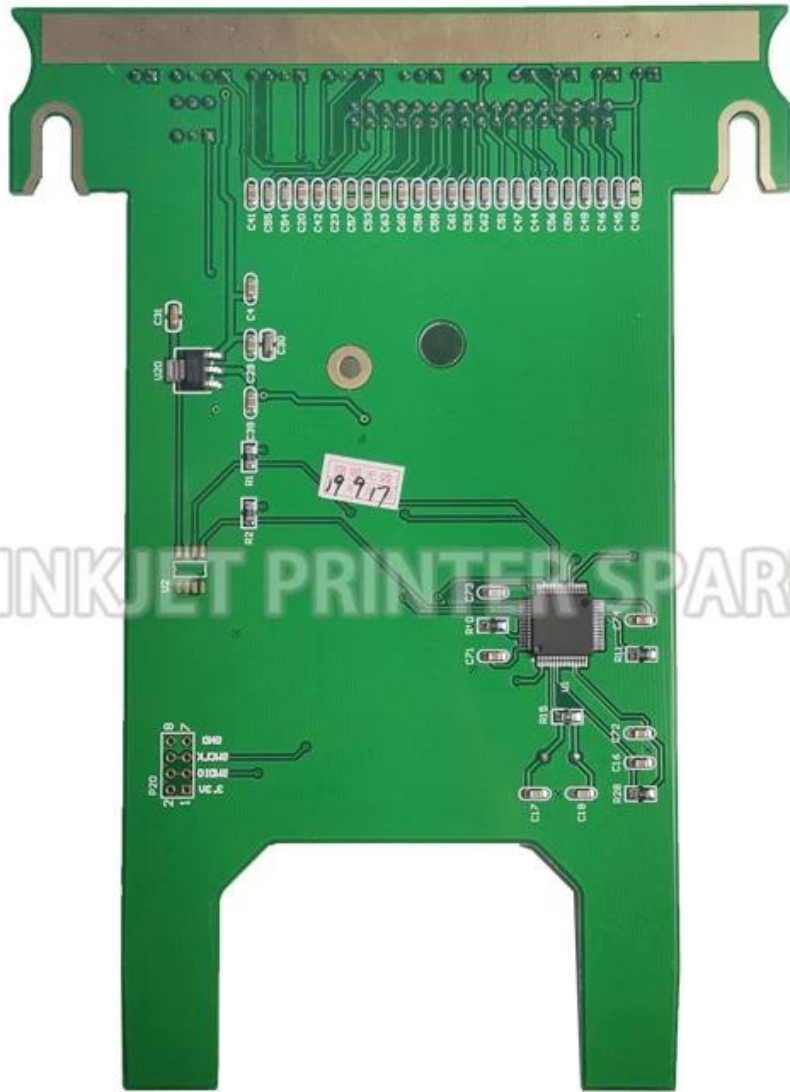


| | |
|---------------|------------------------------|
| Teil Nr. | 2418 |
| Teilname | Kriechbrett |
| Kompatibel zu | Ersatzteile für Markem-Imaje |



IMAJE inkjet printer spare parts

| Product Name | Mold Number | Product Name | Mold Number |
|--|--------------|---------------------------------------|--------------|
| RESONATOR - G HEAD | 7242 | GUTTER BLOCK SINGLE JET,90 SER | 28391 |
| AIR FILTER KIT IP 90 -series F | A36022 | AIR FILTER FOR IMAJE 9232 | PC1572 |
| ONE WAY VALVE FOR S7/S8 | 13727 | QUADRUPLE O RING FOR IMAJE 90 | PL1531 |
| ONE WAY VALVE FOR S7/S8 | 13727 | TREBLE O RING FOR IMAJE 90 SER | PL1530 |
| ONE WAY VALVE FOR S7/S8 | 13727 | E type S series one-way valve | 5525-B |
| ONE WAY VALVE FOR S7/S8 | 13727 | OUTPUT CABLE FOR IMAJE S8 POWE | 14121-PC1273 |
| GUTTER BLOCK - SINGLE JET - EX | 5263 | BOARD - POWER SUPPLY - AUTOMAT | 14121-PC1271 |
| TUBE CONNECTION 1.6MM | PG0159 | POTENTIOMETER | 50145 |
| TUBE CONNECTION 1.6MM | PG0160 | GUTTER BLOCK TWIN JET,90 SERIES | 28392 |
| CONNECTION BOX THREE PORT | ENM0005 | COVER (X3) WITH SCREW-G AND M | 6180-A |
| EHT BLOCK | 10298 | PRINthead COVER FOR IMAJE S SERIES | 6180-C |
| TUBE CONNECTION 4.8MM | ENM0004 | REAR COVER GASKET FOR IMAJE S | 5909 |
| MAKE-UP BOTTLE FOR IMAJE 0.8L | PL0709 | PRINthead COVER GASKET FOR IMA | 6061 |
| INK CARTRIDGE BOTTLE FOR IMAJE 0.8L | PL0711 | REAR COVER FOR IMAJE S SERIES | 6180-B |
| E Type 90 series G nozzle asse | 28270 | E Type 90 series head cover se | PC1635 |
| GUTTER BLOCK SINGLE JET,90 SER | 28391 | Filtro principal 9232 | 19134 |
| S7 - 9020 MAIN FILTER | 17562 | CONNECTOR KIT FOR IMAJE 9040 | 7775 |
| FAN-CONDENSER | 20212 | CHASSIS FOR IMAJE S SERIES ELE | 10133-PC1647 |
| FAN FOR S4/S8/9040 | 5494 | FILTRO-COALESCECEN TE-CON ANILLA | 7765 |
| E type vacuum recovery pump /T | 4295 | 1/4 STRATGHT CONNECTOR FOR IMA | 7767 |
| Type E pump nut | PY0253 | E type S8 coupler | 6562 |
| WRENCH-HEXAGONAL-CANNON | 14434 | INPUT CABLE FOR IMAJE S8 SERIE | 14121-PC1682 |
| WIRED FAN | 28370 | E type S series nozzle cap gas | 6179 |
| S8 FILTER SCREEN -14µm - G and M HEADS | 17673 | BOARD-ADP G AND M | 6007 |
| S4 - S8 MAIN FILTER | 5934 | E type 9020 power supply board | 36522-PC1270 |
| Original E type 9020 control b | 6909 | FIXING RING FOR IMAJE 9232 MAI | PC1740 |
| E type P head component | 17467 | 9040 keyboard mask | 36266 |
| E type 9040 industrial interfa | 36789 | E type 512KB memory card | PC1777 |
| FAN FOR S4/S8/9040 | 5494 | MAGNIFYING CIRCUIT BOARD FOR I | 28629 |
| PROTECTION GRID-FAN | 6689 | COUPLER FEMALE COMPLETE M5*2.7 | 6028 |
| PROTECTOR-RESONATOR | 6405 | COUPLER FEMALE COMPLETE M5*1.6 | 50421 |
| HEAD COVER-M HEAD-HEAD WITH FL | 15886 | E type S series one-way valve | 5525 |
| GUTTER BLOCK - SINGLE JET - EX | 5263 | CONNECTOR-RECUP/BLEED-FOR SING | 6092 |
| EHT BLOCK | 10298 | PUMP CONNECTOR | 3199 |
| HEXAGON SCREW FOR IMAJE PUMPHE | ENM00010 | S4/S8 BLACK INK FILTER | PG0349 |
| BOARD - POWER SUPPLY - AUTOMAT | 14121 | OPAQUE FILTER FOR IMAJE S4/S8 | PG0350 |
| BOARD-POWER SUPPLY-110V220V-WI | 36522 | BLACK INK FILTER FOR IMAJE 9040 | PG0351 |
| SQUARE MAGNET-10X10-FLAT ELECT | 16713 | OPAQUE FILTER FOR IMAJE 9040 | PG0352 |
| SCREW (X 10) - KNURLED - ALUMI | 6206 | PRE-HEAD FILTER FOR IMAJE S8 | 5570 |
| CARTRIDGE - INK FILTER - WITH | 5553 | ENM25683 FILTER FOR PRINthead | 25683 |
| GUTTER BLOCK TWINJET | 5261 | BOADR-RESON APOR SUPPLY GANDMH | 6004 |
| PRESSURE CHAMBER TEFLON MEMBRA | 1 | FILTER KIT FOR 9232 | 40989 |
| E type O ring | PL1212 | IR FILTER KIT FOR IMAJE 9232 | PG0361 |
| PRESSURE SENSOR | 7682 | ELECTROVALVE VISCOMETER | 10086 |
| E type pipe plug | 4485 | BOADR-RESON APOR SUPPLY GANDMH | 11428 |
| FRONT DOOR HINGE(PAIR) | 7818 | TOP COVER | 10251 |
| HINGE(X2)-KEYBOARD | 7596 | LEVEL SAFETY BLOCK | 14123 |
| E type four connection body | 6 | Ink circuit / Modulo de tinta | 37251 |
| E type straight connection | 12 | PC BOARD CHIP FOR IMAJE (S8 M | PC1909 |
| E type gun seat adjustment cam | 5670 | PC BOARD CHIP FOR IMAJE (S8 G | PC1910 |
| E type gun seat locking screw | 5678 | PC BOARD CHIP FOR IMAJE (S8 G | PC1911 |
| E type gun seat adjusted cam (| 5671 | PC BOARD CHIP FOR IMAJE (9040 | PC1912 |
| E S series recovery elbow (wit | PY0287 | MOTOR-PC 9040/9232 | 26966 |
| E type 0.8L square bottle cap | PB0148 | RESONATOR - P HEAD | 17470 |
| KEYBOARD OPERATOR INT-S7 SIGMA | 15978-2 | OPAQUE FILTER FOR IMAJE S SERIES/9040 | 6256 |
| E type gun screwdriver | TL0173 | Electrovalves block 4 - 9020/9 | 34044 |
| E Type 90 series G nozzle asse | 28270-PC1423 | Electrovalves block 4 - 9232 (| 47086 |
| IMAJE S7s KEYPAD HANDHELD TERM | 5280 | INPUT CABLE FOR POWER SUPPLY | 36522-PC1272 |
| COVER (X3) WITH SCREW-G AND M | 6180 | E crystal oscillator line | 6540 |
| MODULATION ASSEMBLY - G HEAD | 18245 | NUT-CANNON-HEXA GONAL | 14433 |
| E type nozzle cover | 5257 | SINGLE JET IMP FOR S4 | 19242 |
| E type 9232 main filter /Y | 19134 | SPACER | 5676 |
| PRINthead FRONT COVER GASKET F | 6179-PC1500 | E 9028 decoder | PL2418 |
| REAR COVER-SCREW CHc M2*6-SEAL | 28676 | E 9018 decoder | PL2435 |
| KEYBOARD FOR 9020/9030 | 28240-P | ASSEMBLED GUTTER SENSOR | 38973 |
| E Type 90 series recovery elbo | PY0088 | WASH STATION MTG BRACKET ASSY | 10012 |
| E S series front panel to indu | 14114 | Head bracket - long | 7329 |
| CHASSIS FOR ELECTROALVES BLOC | 28992 | BOARD BACKLIT DISPLAY CONVERTER | 17704 |
| E S series crystal locking scr | 13870 | E type S4/S8 nozzle | 14431 |
| PROTECTOR-ANTIAPONAMIENTO (*) | 17357 | HEAD COVER-G HEAD-HEAD WITH FL | 15885 |
| PROTECTOR-ANTIAPONAMIENTO(*3) | 17358 | MODULATION BODY ASSEMBLED GL | 40038 |
| PROTECTOR-ANTIAPONAMIENTO(*3) | 17568 | Five pieces of E maintenance t | TL0175 |

COMPANY INFORMATION



One hundred years only do one thing, to provide the best quality and economical ink for all over the world's inkjet printers

At cheef we possess a well-equipped Research and Development facility alongside substantial internal resources to offer custom-made products for specific request. Our core priority is competitive cost with high quality products and fast service.





Payment and Shipment

Payment

1. Generally, we accept the following payment methods: T/T; Western Union; paypal. T/T; western union. And our protection only gives the payment ways accepted by Alibaba Trade Assurance.



Shipment

1. We will sent the items within 5days (working days, Not holiday sea for ink and about 15days for machine after receiving your payment.

2.The shipment is always by Express , air or sea .

Sea transportation: It is used for large volume of products.It is shipped from port to port.

It is the most economical shipment way, we suggest this with order more than 1cbm, the unit cost will be the cheapest.

Air transportation:It is shipped from airport to airport.Compared with sea transportation, costs are relatively higher,but it has high efficiency with about five working days.If the goods weight is more than 180kgs and you also want to receive the goods in short time, we suggest this way.

Express: It is shipped from door to door ,it is very quickly with about 5 working days,and intimate service.Normally if the goods weight is lower than 180kgs , we suggest this way.

If you have any concerns about it ,you can contact us now by email sales@cheef.cn <<mailto:sales@cheef.cn>>

3. When you receive the items you ordered, please check it carefully.Please contact us directly if you have any problems.

4. If you have not got it within the shipping time,please contact us without hesitation. We will check it for you immediately.



FAQ

Q1: Wie bestelle ich Ersatzteile?

A: Geben Sie uns das Modell der Ersatzteile oder der Abbildungen.

Q2: Alle Ersatzteile für die Drucker, die Sie haben?

A: Wir machen diese Branche bereits seit mehr als 10 Jahren. Für die meisten Teile können wir Ihnen behilflich sein!

F3: Sind diese Ersatzteile mit unseren Tintenstrahldruckern kompatibel?

A: Ja, keine Sorge, kompatibel für Drucker perfekt.

Wir haben bereits vor dem Verkauf getestet.

Q4: kann ich probieren?

A: Ja sicher können Sie Probe versuchen und den Test vor Massenauftrag durchführen.

F5: Haben Sie außer den Ersatzteilen auf Ihrer Website noch andere Ersatzteile?

A: Ja, sicher, da jeder Markendrucker mehrere hundert Ersatzteile hat, listen wir nicht alle auf. Sie können uns also kontaktieren und uns die Liste der benötigten Ersatzteile geben, und wir unterbreiten Ihnen ein entsprechendes Angebot.

F6: Welche anderen Produkte bieten Sie außer Ersatzteilen für Drucker an?

A: Ja, wir liefern Tinte, Make-up und Drucker sowie gebrauchte Markendrucker.

Sie können uns jetzt für die Anfrage kontaktieren.

Q7: Außer Produkte zur Verfügung stellen, welchen Service Sie mit uns erbringen können?

A: Wenn Sie technische Unterstützung benötigen und wir Ihnen helfen können, machen wir diese Branche bereits seit mehr als 10 Jahren.

Q8: Wie können wir Sie kontaktieren?

A: Bitte senden Sie uns die Anfrage jetzt wie folgt oder senden Sie uns eine E-Mail.



86-512-6281-0865



86-138-620-19623



86-512-6730-1180



SALES@CHEEF.CN