

How to install the ink core of the Videojet 1000 series inkjet printer?

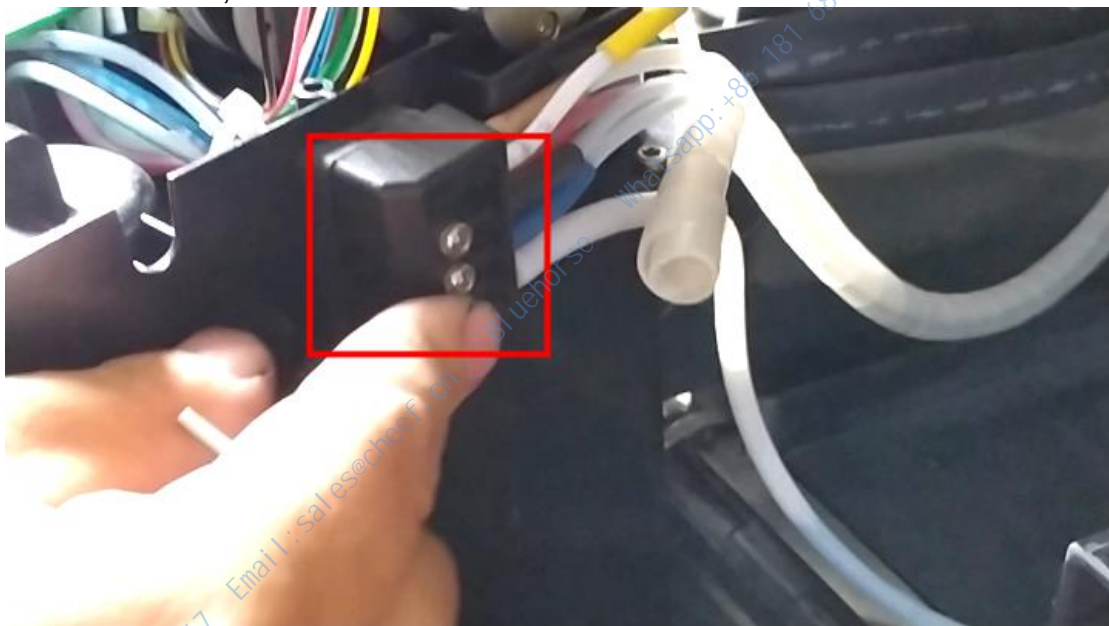
Now we need to install the ink core. Before we assembled the ink core, we need to install the pipe.

See if the washers fall off when installing:

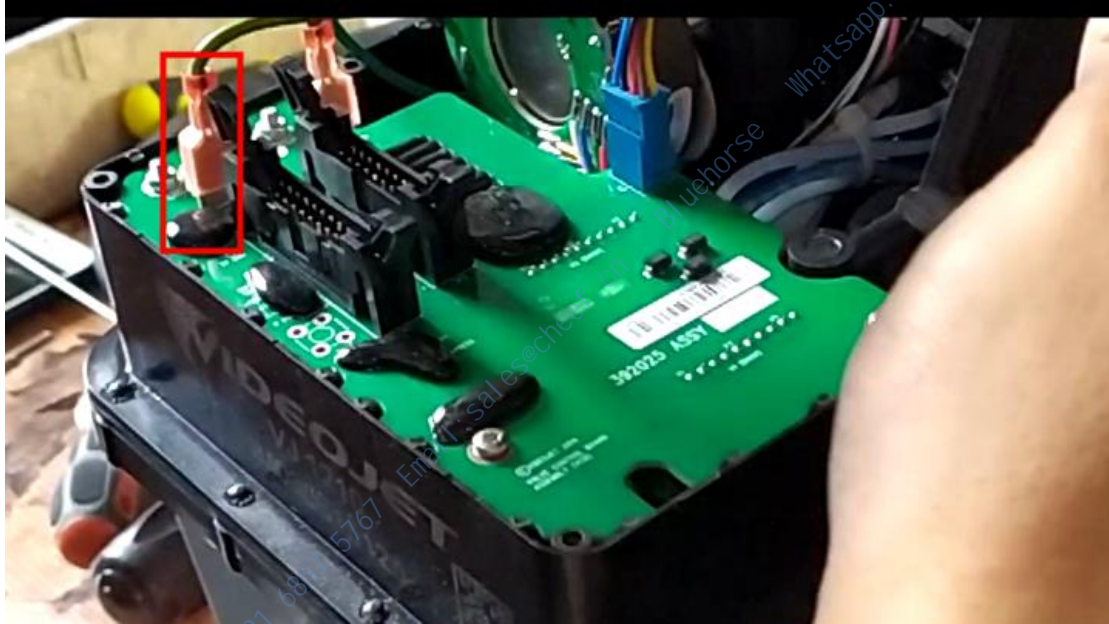


Washers must be there, or they will leak ink.

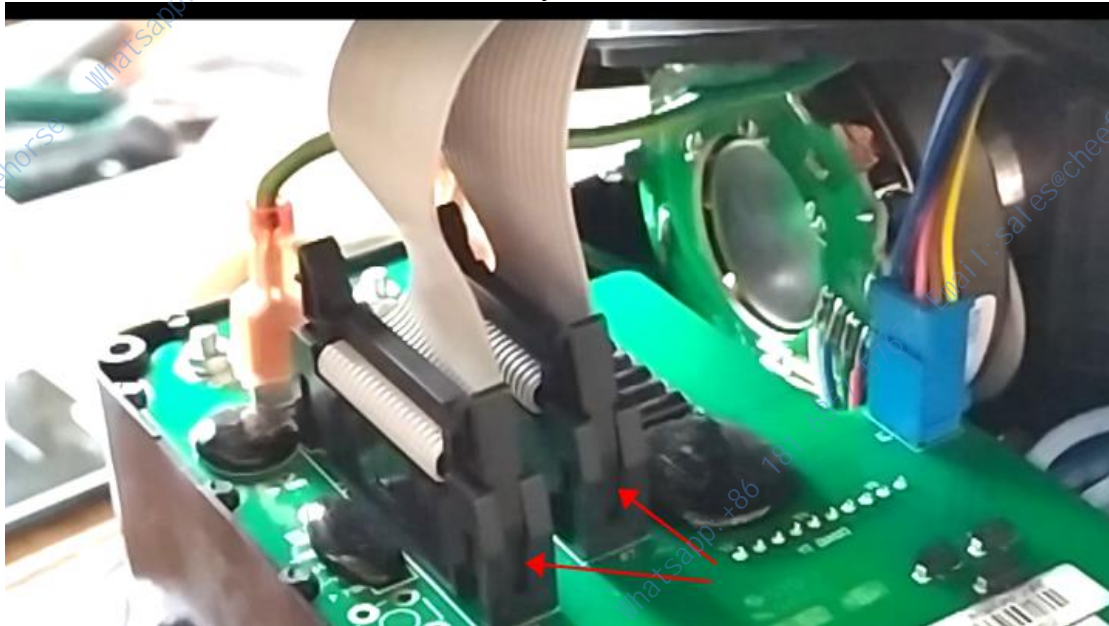
Then we install it. The two screws on it must be tightened until the screws can not be screwed, otherwise ink will leak:



We put the top cover on,
First, we install the ground wire:



Then install the two lines above one by one:



After we cover the lid, the screws are installed and the entire ink core is installed:

