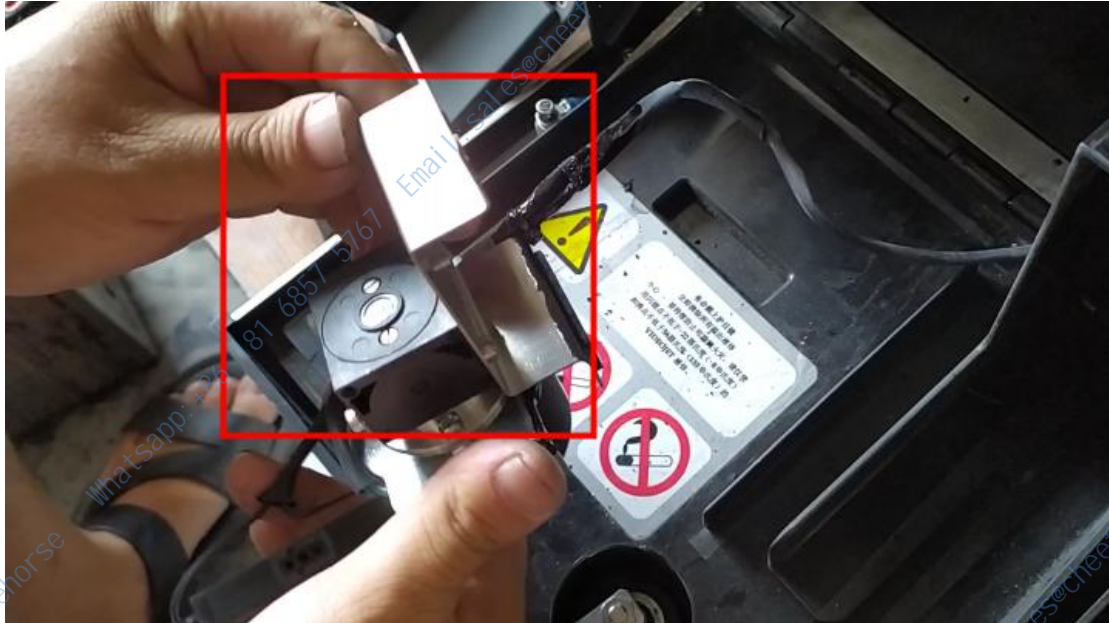


How to install the recovery pump with its ink splitter and solenoid valve and tubes for Videojet 1000 series inkjet printer?

This is the recovery pump:



Let's assemble the accessories for the recovery pump first:



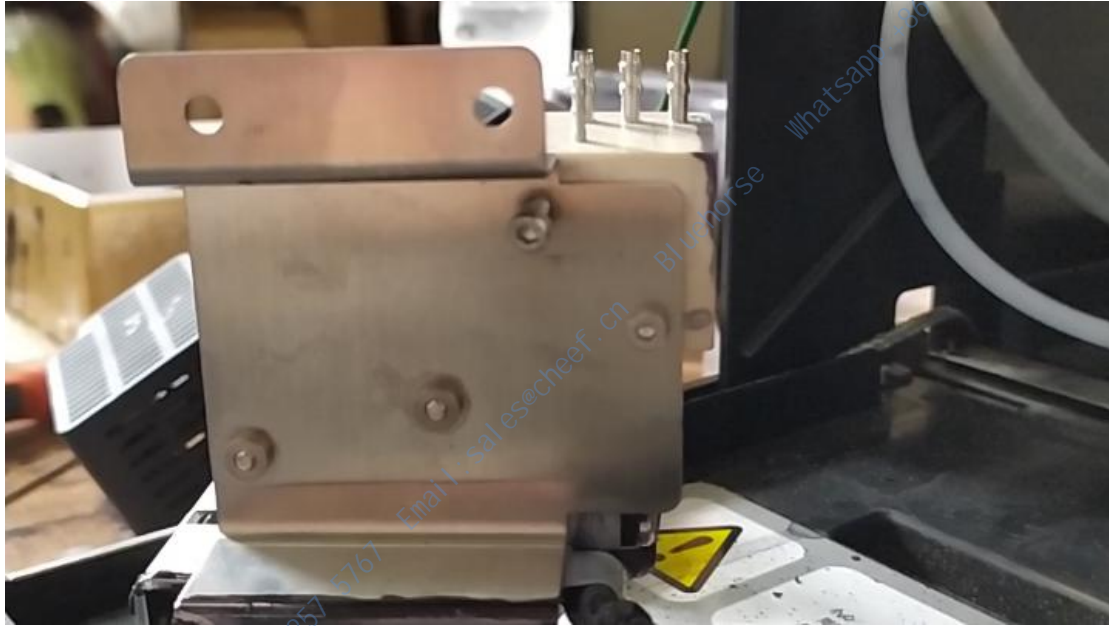
Let's put it on top of the recycling pump and install the screws:



We installed the ink diversion block:



Then we install the screws on the side of it:



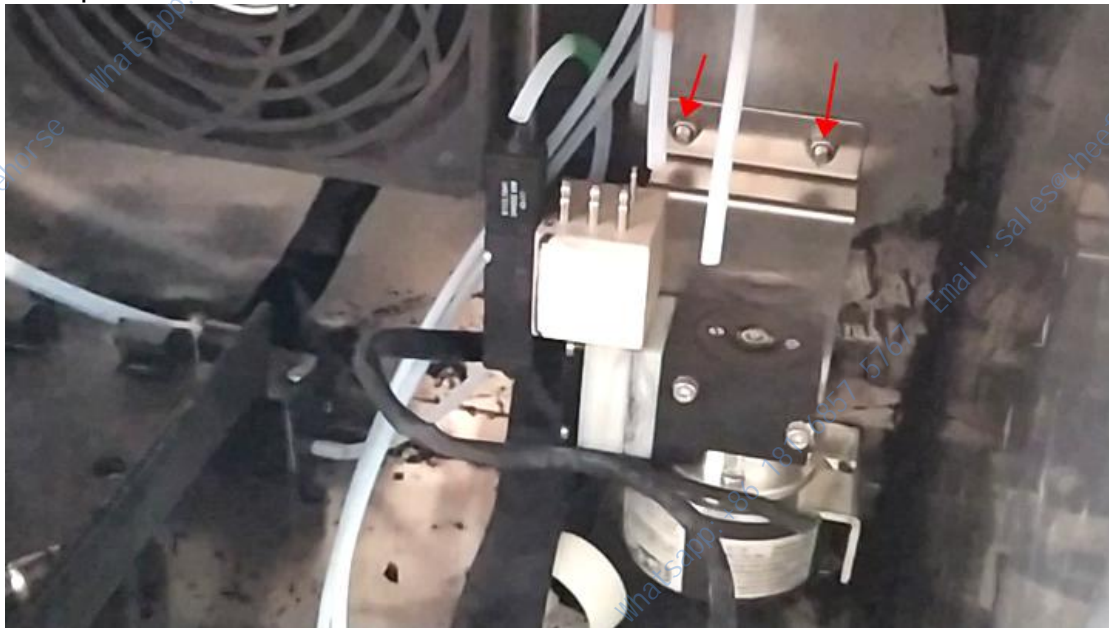
We install the solenoid valve on the recovery pump in this position:



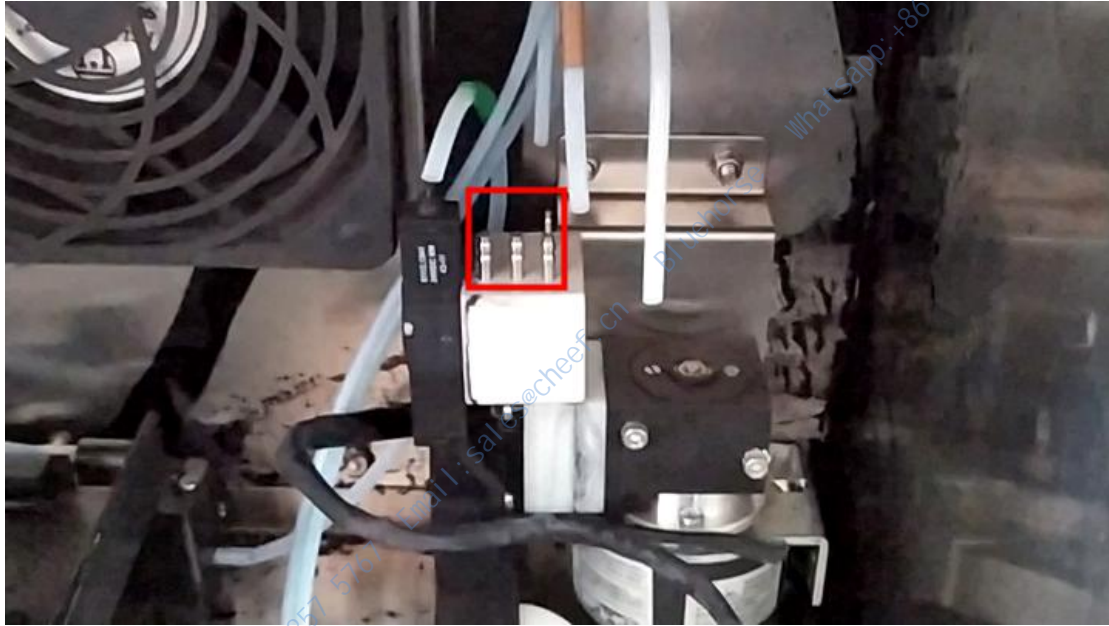
The recycling pump is installed:



Then we install it in the machine,
Let's put it here and install the two screws:



We are going to connect four tubes to the four interfaces of the recovery pump:



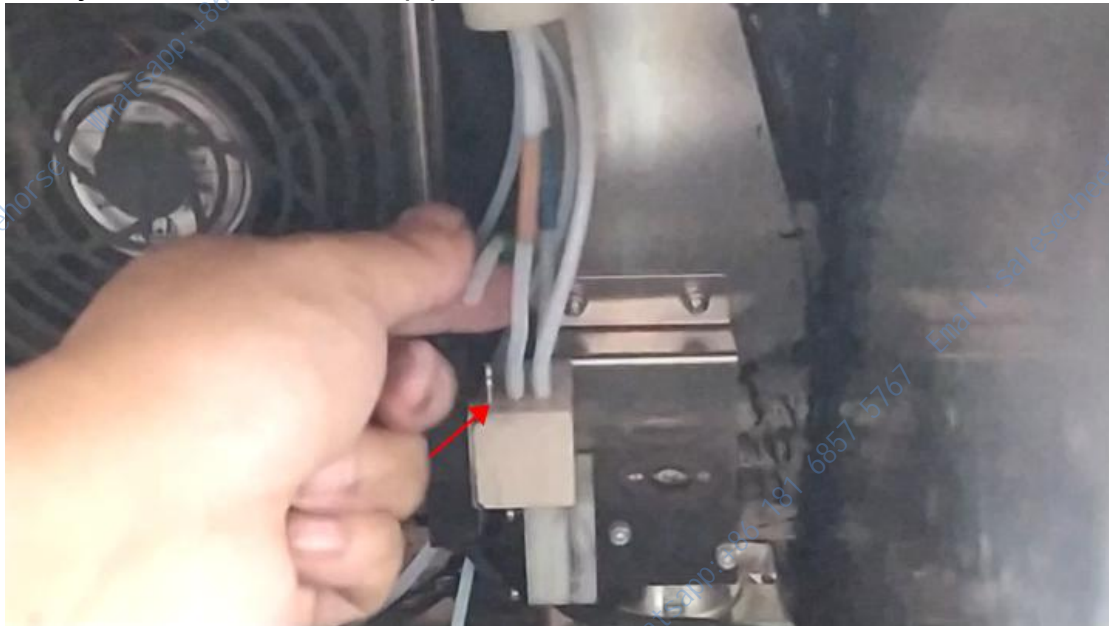
Let's install the recycling tube first:



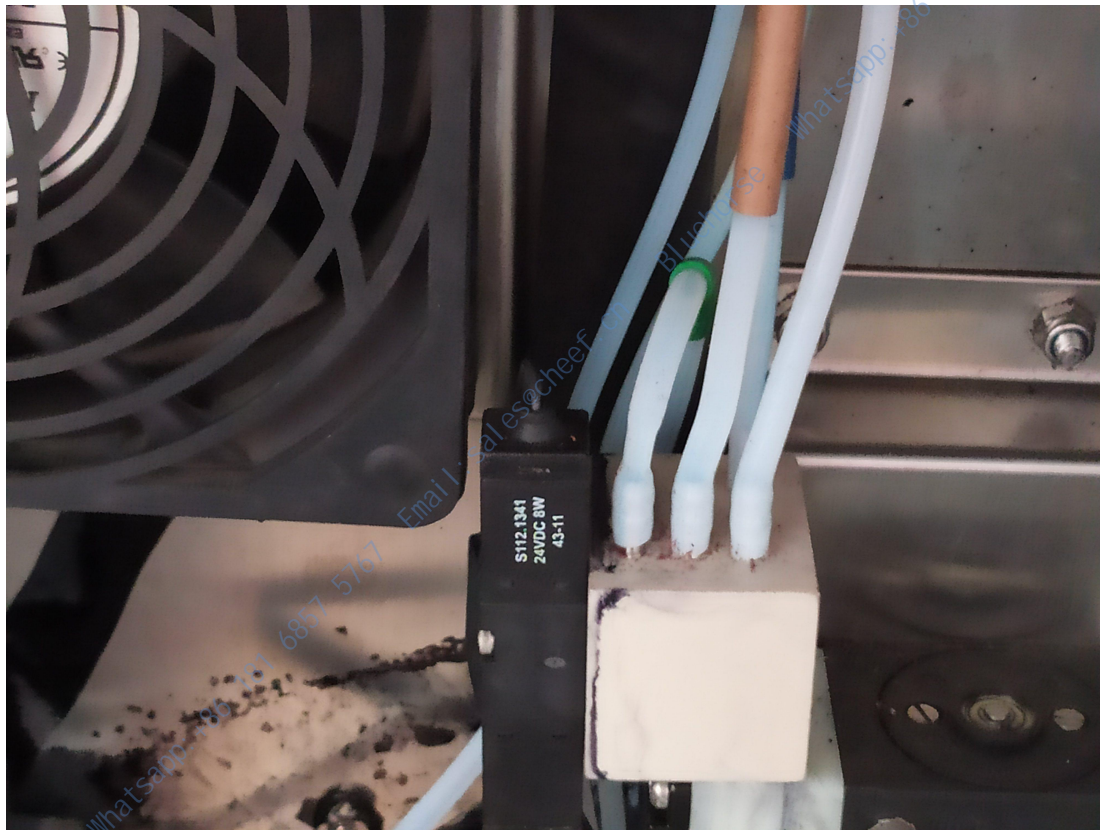
Then we install this blue cleaning tube and this orange tube:



Let's just install the exhaust pipe here:



Pipes installation complete:



Then the installation of the pipe and the recovery pump is complete:

