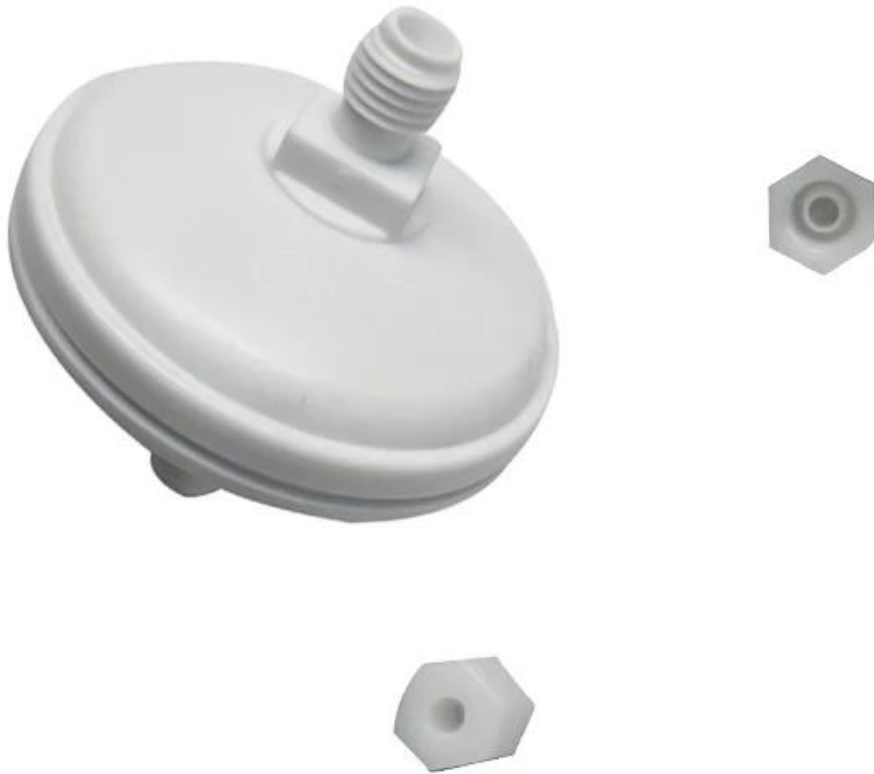


|           |                         |
|-----------|-------------------------|
| 003 00000 | 003-1109-002            |
| 003 000   | 00000000 00000          |
| 00 000000 | 00000000000 0000000 000 |



### For Citronix Inkjet Printer Spare Parts

| Product Name                   | Mold Number       | Product Name                           | Mold Number  |
|--------------------------------|-------------------|--|--------------|
| CITRONIX                       | PC1266            | PUMP FOR CITRONIX                      | PP0224       |
| NOZZLE PLATE 60MICRON          | PC1266            | Probe Resonator                        | 002-2013-001 |
| DEFLECTOR PLATE ASSY FORCITRON | 002-2005-001      | SwitchPower                            | 004-1005-001 |
| C type solvent filter          | 003-1018-001      | PHASE AMPLIFIRE PCBOARD                | 002-1073-002 |
| GUTTER FILTER FOR CITRONIX     | 003-1109-002      | TUBE PTFE (1/8*1/16) MM                | 002-1031-001 |
| MAIN FILTER FOR CITRONIX       | 003-1016-001      | TUBE PTFE (1/4*1/8) MM                 | 003-1081-001 |
| FILTERS KIT (4 pieces)         | PG0219            | POWER SUPPLY FORCITRONIX               | 004-1002-001 |
| FAN FORCITRONIX                | PC1334            | MEMBRANE FOR CITRONIX                  | 004-1010-001 |
| CHINESE LCD FORCITRONIX        | 004-2012-001      | SOLENOID VALVE 3WAY FORCITRONI         | 003-1024-001 |
| EMI FILTER FOR CITRONIX        | 004-1004-001      | SOLENOID VALVE 2WAY FORCITRONI         | 003-1023-001 |
| POWER SUPPLYDC                 | 004-1029-001      | HEAD COVER FOR CITRONIX                | 002-2012-002 |
| STROBE LED ASSY FORCITRONIX    | 002-2008-002      | BLOCK DROGENERATOR                     | 002-2014-001 |
| LID SWITCHASSY                 | 002-2009-001      | O-Ring, ResonatorSeal                  | 002-1100-001 |
| CHARGE ELECTRODE FORCITRONIX   | 002-1008-006      | Cam, Jet Alignment 2008                | 002-1118-001 |
| GASKET, PRINTHEAD VALVE        | 002-1029-001      | PUMP HEAD FOR CITRONIX (WITHOUT MOTOR) | 003-1005-001 |
| PRESSURE SENSOR FORCITRONIX    | 003-2004-001      | KNOB KNURLED                           | 019-1501-001 |
| DROP GENERATOR FOR CITRONIX    | 002-2014-002      | BRACKET, DROP GENERATOR 580            | 002-1002-005 |
| MOTOR FOR CITRONIX             | 003-1006-001      | Plate, Deflector GND -micro            | 009-1091-001 |
| FEED FILTER FOR CITRONIX       | 003-1177-001      | 22 MEG EHTRESISTOR(3W)                 | EA1496       |
| MAKEUP TANK ADAPTER ASSY       | 003-2003-001      | COVER PRINTHEADBACK                    | 002-1011-004 |
| INK TANK ADAPTER ASSY          | 003-2001-001      | SOLENOID VALVEGASKET                   | 003-1050-001 |
| PICKUP TUDE ADAPTER            | 003-1131-001      | EHT SENSOR LINE 3MFOR                  | PC1734       |
| FITTING 3/8 LMALE              | 003-1095-001      | CITRONIX/WILLETT                       | PC1733       |
| FITTING STRAIGHT MALE          | 003-1013-001      | VALVE PH                               | 003-1025-001 |
| FTTING STRAIGHT 1/8 ODTUBE     | 003-1099-001      | PRINT HEAD LINE CONNECTORFOR C         | 002-1098-001 |
| FITTING 1/4-2810-32            | 003-1162-001      | SCREW FOR DROP GEN BRACKETFOR          | PL1863       |
| FITTING 1/4 L MALE             | 003-1028-001      | MOTOR CABLES                           | PC1826       |
| SMALL AIR FILTER (1EA)2003-200 | 004-1015-001      | OPAQUE PUMP HEAD FOR CITRONIX          | PP0362       |
| GUTTER BLOCK FORCITRONIX       | 002-1013-003      | OPAQUE PUMP ASSY FOR CITRONIX          | PP0363       |
| GUTTER SENSOR                  | 002-2007-001      | MOUNT FOR CITRONIX PRINTHEAD           | PC1857       |
| SCREW FOR BLOCK DROGENERATOR   | 002-1021-002      | Cap, Tank (Yellow)                     | 003-1105-001 |
| Viscometer Sensor ForCitronix  | 003-1022-001      | Assembly, Bottle FillAdapter           | 003-2012-001 |
| PRINT HEAD VALVE INK BLOCK ASS | 002-1003-003      | Cap, Tank (Black)                      | 003-1021-001 |
| Print Head Cover Fixed Column  | 002-1102-001      | AIR FILTER KIT FOR CITRONIXC13         | 004-1015-003 |
| NOZZLE PLATE 50 MICRON2008     | 002-2027-002      | PESONATOR SHEET FOR CITRONIX           | 280          |
| SOLENOID VALVE 3WAY FORCITRONI | 03-1025-001-PC138 | NOZZLE ASSEMBLY FORCITRONIX            | 002-2025-002 |
| NOZZLE PLATE 40 MICRON2008     | 002-2026-002      |  |              |

# COMPANY INFORMATION



One hundred years only do one thing, to provide the best quality and economical ink for all over the world's inkjet printers

At cheef we possess a well-equipped Research and Development facility alongside substantial internal resources to offer custom-made products for specific request. Our core priority is competitive cost with high quality products and fast service.





## Payment and Shipment

### Payment

1. Generally, we accept the following payment methods: T/T; Western Union; paypal. T/T; western union. And our protection only gives the payment ways accepted by Alibaba Trade Assurance.



## Shipment

1. We will sent the items within 5days (working days, Not holiday sea for ink and about 15days for machine after receiving your payment.

2.The shipment is always by Express , air or sea .

Sea transportation: It is used for large volume of products.It is shipped from port to port.

It is the most economical shipment way, we suggest this with order more than 1cbm, the unit cost will be the cheapest.

Air transportation:It is shipped from airport to airport.Compared with sea transportation, costs are relatively higher,but it has high efficiency with about five working days.If the goods weight is more than 180kgs and you also want to receive the goods in short time, we suggest this way.

Express: It is shipped from door to door ,it is very quickly with about 5 working days,and intimate service.Normally if the goods weight is lower than 180kgs , we suggest this way.

If you have any concerns about it ,you can contact us now by email [sales@cheef.cn](mailto:sales@cheef.cn) <<mailto:sales@cheef.cn>>

3. When you receive the items you ordered, please check it carefully.Please contact us directly if you have any problems.

4. If you have not got it within the shipping time,please contact us without hesitation. We will check it for you immediately.



# التعليمات

## q1: كيفية ترتيب قطع الغيار؟

a: تعطينا نموذج قطع الغيار أو الصور.

## q2: جميع قطع الغيار للطابعات لديك؟

ج: نحن نفعل هذه الصناعة بالفعل لأكثر من 10 سنوات. بالنسبة لمعظم الأجزاء ، يمكننا مساعدتك

## Q3: هل هذه قطع الغيار متوافقة لطابعات نفث الحبر لدينا؟

ج: نعم ، لا تقلق ، يمكن أن يتوافق مع الطابعات الكمال.

لقد اخترنا بالفعل قبل البيع إلى السوق.

## q4: يمكنني محاولة عينة؟

ج: نعم ، بالتأكيد ، يمكنك تجربة العينة وإجراء الاختبار قبل طلب الجملة.

## باستثناء قطع الغيار على موقع الويب الخاص بك ، هل لديك قطع غيار أخرى؟

ج: نعم ، بالتأكيد ، نظرًا لأن كل طابعات العلامات التجارية بها مئات قطع الغيار ، فإننا لا ندرج جميعها ، لذا يمكنك الاتصال بنا وإعطائنا قائمة قطع الغيار التي تحتاجها ، وننقل إليك وفقًا لذلك.

## Q6: باستثناء قطع الغيار للطابعات ، ما هي المنتجات الأخرى التي تقدمها؟

ج: نعم ، نحن نقدم الحبر والطابعات والمكياج وطابعات العلامات التجارية المستعملة.

يمكنك الاتصال بنا للاستفسار الآن.

## q7: باستثناء توفير المنتجات ما الخدمة التي يمكنك توفير معنا؟

ج: إذا كنت بحاجة إلى بعض الدعم الفني ، ويمكننا مساعدتك ، فنحن نقوم بهذه الصناعة بالفعل لأكثر من 10 سنوات.

## q8: كيف يمكننا الاتصال بك؟

a: يرجى ارسال التحقيق لنا الآن على النحو التالي أو مراسلتنا عبر البريد الإلكتروني.

